



Synapse

Operating Manual

2026.04.06

Marine Magnetics Corp

135 SPY Court
Markham, ON
L3R 5H6 Canada

Tel: +1 905 479-9727 fax: 905 479-9484
Email: support@marinemagnetics.com
URL: www.marinemagnetics.com

Contents

- 1 Introduction3
 - 1.1 Synapse gen.23
 - 1.2 Synapse array network3
 - 1.3 FSK and RS-232 connection modes3
 - 1.4 Automatic master/client arbitration3
 - 1.5 Dimensions5
 - 1.6 External ballast module6
- 2 System connection diagrams.....7
 - 2.1 FSK / transceiver telemetry for soft tow cable7
 - 2.2 Side Scan Sonar interface.....9
 - 2.3 Synapse gen.2 AUV/ASV/ROV interface.....10
 - 2.4 RS-232 Interface.....10
 - 2.5 Synapse gen.2 electrical specifications11
 - 2.6 Synapse LED: Node and Network Status12
 - 2.7 Synapse Transverse Gradiometer13
 - 2.8 Gradiometer Frame Assembly14
- 3 Operating the Synapse gen.2 system using BOB Software16
 - 3.1 Setting up a new survey16
 - 3.1.1 Create a new BOB survey and select the appropriate magnetometer type16
 - 3.1.2 Connect to the survey GPS via COM port16
 - 3.1.3 Connect to the Magnetometer via COM port17
 - 3.1.4 Configure Synapse towfish or array18
 - 3.1.5 Finalizing the equipment configuration in BOB20
 - 3.2 Magnetometer data display in BOB21
 - 3.3 Profile Plot: Real-time and Review panes22
 - 3.4 Calibrating the depth sensor zero level.....23
 - 3.5 Towfish Attitude Indicator23
 - 3.6 Layback distance estimation for optimal magnetometer positions24
 - 3.7 Saving and exporting survey data25
 - 3.7.1 Survey Export Log format – Description of available data columns and units.....26
- 4 Isolation Transceiver for FSK telemetry.....27
 - 4.1 Configuring the gen.3 isolation transceiver and Synapse 2 towfish28
 - 4.2 Configuring the gen.2 Side Scan integration transceiver29
 - 4.3 Isolation transceiver electrical specifications.....30
- 5 Synapse Data Format32
 - 5.1 Standard Format – Single magnetometer32
 - 5.2 Compact Format – Single magnetometer33
 - 5.3 Compressed (Base64) Format – Single magnetometer34
 - 5.4 Gradiometer and Array Data – Standard format.....34
 - 5.5 Missing sensor measurements in data35

- 5.6 Synapse data examples36
- 6 Synapse Command Protocol Overview37
 - 6.1 General command format rules.....37
 - 6.2 Synapse commands and responses.....38
 - 6.2.1 Checking status of current Synapse network38
 - 6.2.2 Configuring the network (CAN bus) termination resistors38
 - 6.2.3 Assigning master node and requesting master/client status38
 - 6.2.4 Checking and setting the time and date.....38
 - 6.2.5 Array synchronization39
 - 6.2.6 Enabling/disabling power to towfish, and power to internal peripherals within towfish.....39
 - 6.2.7 Checking output voltage and current, and power to peripherals (voltage and current)39
 - 6.2.8 Depth sensor calibration39
 - 6.2.9 Checking firmware versions39
 - 6.2.10 Checking or setting output data format40
 - 6.2.11 Configuring peripherals inside the Synapse towfish.....40
 - 6.2.12 Configuring towfish menu41
 - 6.2.13 Configuring transceiver menu41
- 7 Maintenance42
 - 7.1 Deployment and Storage Tips42
 - 7.2 O-ring sizes.....42
- 8 Troubleshooting43

1 Introduction

The Synapse system consists of 1 to 30 Synapse marine magnetometers that can be used individually or as an array when mounted on a gradiometer frame. The array network utilizes a robust CAN bus integrated into the array wiring harness, enabling communication with the entire array through a single data port.

Each Synapse towfish is equipped with a scalar total field magnetometer sensor and a leak detector. Additional auxiliary sensors can also be installed, including an altimeter, a depth sensor and a tilt/attitude sensor (IMU). The integrated altimeter is a 200 kHz single-beam echo sounder. When two Synapse units with altimeters are used at the same time, one of the altimeters must be disabled (by selecting the active altimeter in software) or pointed upwards to prevent mutual interference. (Pointing the altimeter upwards turns it into an effective depth sensor).

At the initial launch, Synapse supported only FSK telemetry and required an isolation transceiver to operate. The isolation transceiver electronics provides a regulated and isolated power supply to the towfish array and handles time synchronization as well as all communication between the towfish and the top-side data logger.

The new generation Synapse gen.2 introduces support for direct RS-232 telemetry, making the transceiver optional and enabling integrations with unscrewed and autonomous platforms such as ASV, AUV and ROV.

The underwater isolation transceiver model supplied with magnetometer arrays is enclosed in pressure housing similar to those of the towfish and has two connections: the brass end cap is the input from the frame/towing system, and the black plastic end cap is the output towards the array.

1.1 Synapse gen.2

At the heart of Synapse gen.2 is a more powerful and versatile electronics module (SYN), that introduces a number of improvements to the Synapse communication protocol, adds support for RS-232 in addition to FSK interface, features an expanded set of supported commands, automatic master/client arbitration for arrays, and standardized command format and addressing (See Section 6 for details.). When used with FSK transceiver it requires a new gen.3 isolation transceiver with firmware 3.0 or newer.

All legacy SeaSPY2 style single-byte terminal commands have been made obsolete in Synapse gen.2 and transceiver firmware, and replaced with new commands. All toggle-style commands have also been eliminated and replaced with clear on/off states expressed as 1 or 0. See Section 6 for details.

The FSK transmit and receive frequencies are now set to different channel bands, to ensure error-free full-duplex operation even with many magnetometers connected to the same FSK cable. This means that new SYN devices are no longer compatible with older gen.2 transceivers or previous generation Synapse gen.1 nodes. The new generation 3 transceiver features a legacy support mode to communicate with older devices that used previous FSK transmit and receive channels. See Section 4.1 for details.

1.2 Synapse array network

Synapse was developed to enable arrays of flexible sizes to be perfectly synchronized using a CAN bus network integrated into the array wiring harness. One of the array nodes (i.e. towfish) acts as the master node and communicates with the host computer or the transceiver. Other 'client' nodes send data to the master via the CAN bus, to be combined into a single data string that then gets forwarded to the host. The master node is also in charge of accurately synchronizing all connected array nodes to ensure that data is collected in perfect synchronicity. Each unit's serial number serves as its array network address. All interface and configuration commands can be addressed either to the master unit, or to any specific individual unit using its serial number.

1.3 FSK and RS-232 connection modes.

Each Synapse gen.2 towfish has an 8-pin interface connector with allowance for both RS-232 and FSK communication. Both modes can be used simultaneously or separately.

When connected via FSK and transceiver, all Synapse array nodes share the same FSK communication lines, and receive the same commands sent to the array by the transceiver and host. Only the master node sends data and responds to the transceiver over FSK, unless the command was addressed to a specific node within the array.

When connected via RS-232 without a transceiver, communication is between the computer and a single Synapse unit: the unit connected to the serial port. Multiple serial ports on the host computer can be used to interface to multiple Synapse nodes. Each node will always output its own local data over its serial port when sampling, whereas the master node will output the combined data string from the entire array (provided that CAN bus is in place).

1.4 Automatic master/client arbitration

In an array of Synapse nodes, the master node will output the combined array data string from all nodes and will keep the network in sync automatically.

Early Synapse models required the user to manually configure a single master node when combining several units into an array. If no master was selected, the array appeared unresponsive. And if multiple master nodes were present there was crosstalk leading to loss of data.

Synapse gen.2 introduced in June 2025 features automatic master/client arbitration that seamlessly selects a single master node in any array immediately following the system power-up, or any time a configuration changes during the operation of the array. This eliminates the earlier scenarios with either multiple masters leading to crosstalk, or lack of master leading to silence. If the master node is unplugged from the array or stops communicating, another node will automatically take over as the new master, thus ensuring continuous communication.

Individual nodes can be programmed to power-up as master or client, allowing for predictable operation, especially when a direct RS-232 connection is used through a single serial port connected to a specific node. The master node will output the full Synapse data string from all nodes and will keep the network in sync automatically.

The Synapse gen.2 network will function even if all nodes are configured as master, or all are configured as client, since the nodes will always arbitrate the selection of a single master automatically.

If the Synapse network is connected, a single master node gets selected by the Synapse gen.2, enabling normal array operation even in the case of a single serial port connection. If the Synapse CAN bus network is not connected (or damaged), then all nodes continue to operate as independent masters.

When the master node receives commands over the direct serial connection, it will forward some of those commands to the rest of the array as needed, via the CAN bus connection.

1.5 Dimensions

Dimension	With altimeter	Without altimeter
Length overall	940 mm (37 in)	892 mm (35.1 in)
Diameter	76.2 mm (3 in)	76.2 mm (3 in)
Dry weight	4.2 kg (9.3 lbs)	3.9 kg (8.6 lbs)
Weight in water	Neutral +/- 0.025 kg (sea water)	Neutral +/- 0.025 kg (sea water)

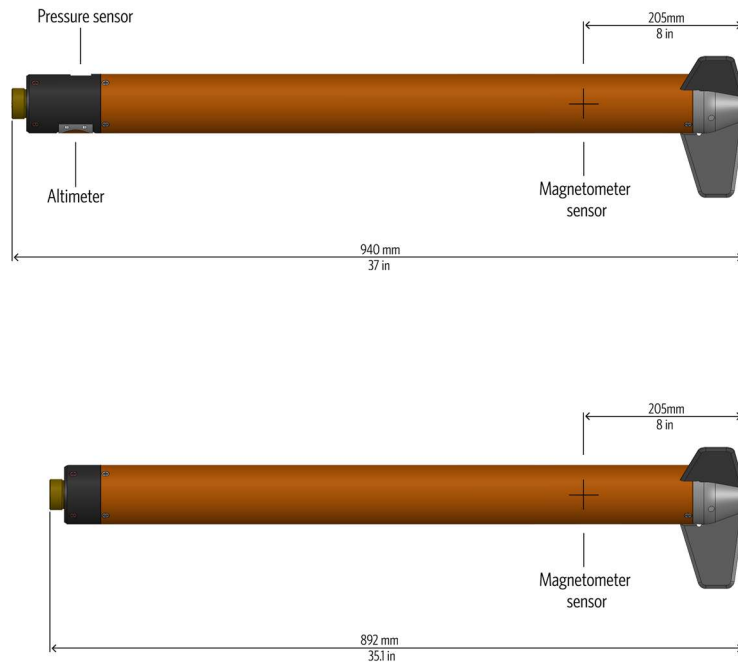


Figure 1-1 - Synapse magnetometer towfish dimensions, with and without altimeter.

1.6 External ballast module

Synapse towfish are neutrally buoyant for sidescan sonar and AUV integrations, as well as array frame installations.

The optional external ballast module can be used when a single Synapse towfish is towed from a long soft tow cable, to help sink the towfish deeper, as well as help keep the altimeter transducer pointing downward when used with a stiff tow cable.

The ballast module adds 1.7 kg (3.7 lbs) when submerged.

The recommended installation position for the external ballast module is illustrated below. Ensure that the ballast pod is lined up with the downward facing tail fin matching the orientation of the altimeter transducer, and is positioned no closer than 12 in / 30cm from the tail end of the towfish. Multiple ballast modules can be installed when extra weight is needed.

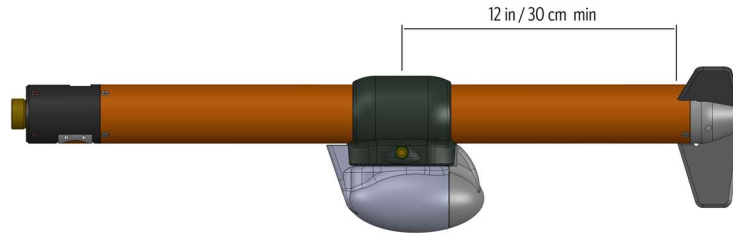


Figure 1-2 - Optional external ballast module adds 1.7 kg (3.7 lbs) in water and should be positioned at least 30cm (12 in) from the tail end

2 System connection diagrams

2.1 FSK / transceiver telemetry for soft tow cable

The top-side telemetry for towing with a long soft tow cable or coaxial cable is handled by the isolation transceiver. The transceiver provides a stable power supply to the towfish and converts the RS-232 data interface to FSK for communication over the long tow cable. Second generation transceivers introduced in 2023 include an integrated GNSS for synchronizing the towfish to UTC time. An optional external GNSS input connector is also provided, for installations where the transceiver is not exposed to open sky.

See section for 4 more details on the Isolation Transceiver.

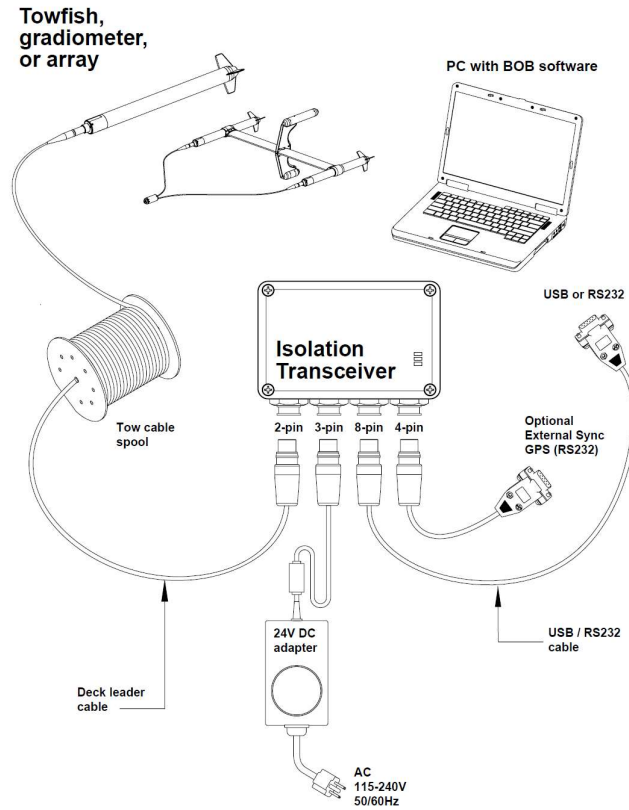


Figure 2-1 - Connection diagram for towing a single Synapse or a Synapse gradiometer using a desktop isolation transceiver

Synapse arrays of arbitrary size can be wired using a simple wiring scheme shown in Figure 2-2, where a high-power underwater isolation transceiver connects the entire array to a single RS-232 host port on the array frame or the ROTV. The transceiver converts RS-232 to FSK and provides both power and communication to the whole array via the same pair of conductors. An additional 3-conductor CAN bus wiring connecting all Synapse nodes is integrated into the array wiring harness, enabling the Synapse network operation.

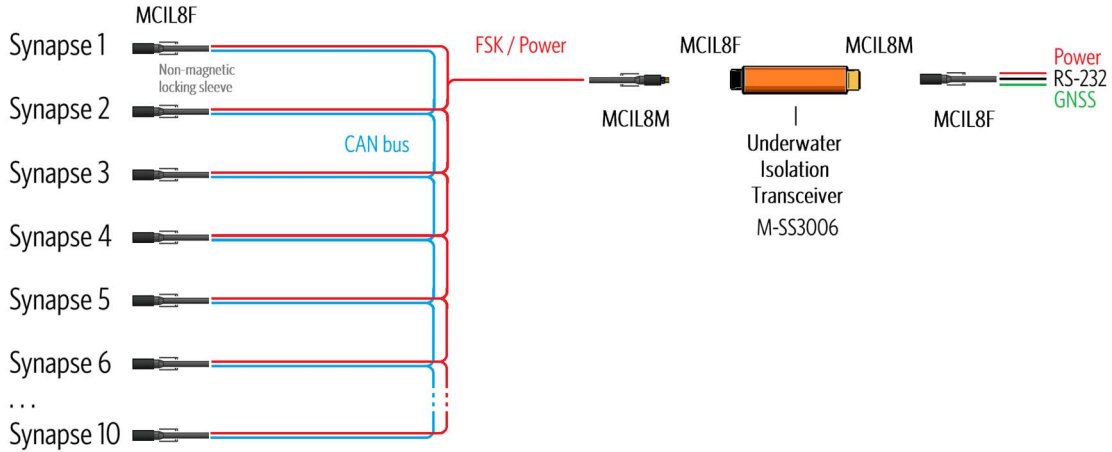


Figure 2-2 - Connection diagram for a 10-node array using a high-power underwater isolation transceiver mounted on the array frame

The high-power underwater isolation transceiver is supplied with a lab test cable that provides connections for a DC power input (24V DC recommended) and RS-232 interface to the host PC. An additional RS-232 input is provided for connecting an optional external GNSS, which enables the transceiver to synchronize itself and the Synapse array to GNSS time.

Note: the high-power underwater isolation transceiver is designed to dissipate excess heat into the water through its brass end cap. When testing in a lab environment, ensure that the transceiver is immersed in water to prevent overheating. Do not immerse the transceiver in water unless connectors at both ends of the transceiver have cables plugged into them or are otherwise sealed from water.

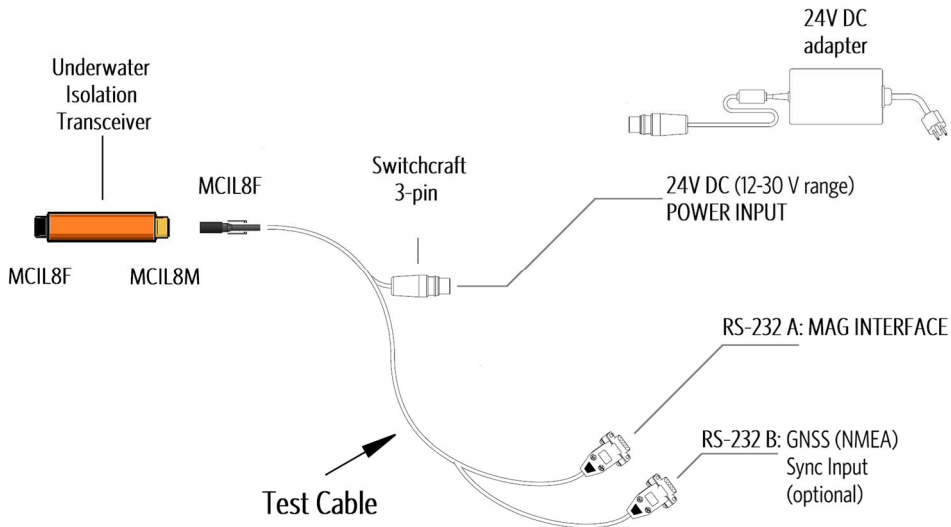


Figure 2-3 - Connection Diagram for lab testing using a high-power underwater isolation transceiver.

Synapse gen.2 adds the option of using RS-232 telemetry without the isolation transceiver, connecting each Synapse towfish to a dedicated RS-232 port on the frame’s multiplexer as shown in Figure 2-4. An additional wiring harness joins the CAN bus conductors of all tow cables together to enable the Synapse network operation.

Note 1: Only a single RS-232 port is needed to interface to the entire Synapse array when the CAN bus network is connected. However having all Synapse nodes connected to available RS-232 ports may provide additional redundancy.

Note 2: CAN bus termination resistors (integrated into every Synapse magnetometer) must be configured appropriately for the CAN bus to operate. Please refer to Section 6.2.2 for details.

Note 3: RS-232 Rx/Tx conductor pair must be shielded to minimize communication noise, and V+/GND conductor pair should be twisted in order to minimize the amount of magnetic interference with the magnetometer measurements.

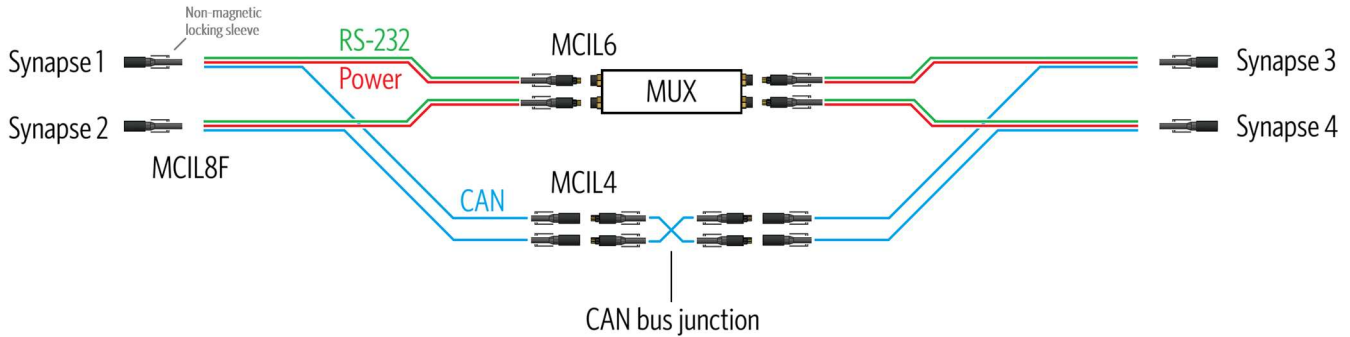


Figure 2-4 - Connection diagram for a 4-node array using RS-232 connections between each magnetometer and the multiplexer on the frame

2.2 Side Scan Sonar interface

The Side Scan Sonar (SSS) interface for Synapse operated through FSK consists of a short 5 or 10m tow cable and a submersible SSS interface module that contains an isolation transceiver. The SSS interface module is coupled mechanically to the SSS tow point and connected to the magnetometer interface port on the SSS unit. The SSS interface module is supplied with a lab test cable that provides connections for a DC power input (24V DC recommended) and RS-232 interface to the host PC.

See section for 4 more details.

Synapse gen.2 also offers a direct RS-232 connection option as an alternative to using an FSK transceiver. This type of side scan interface features a simplified cable design.

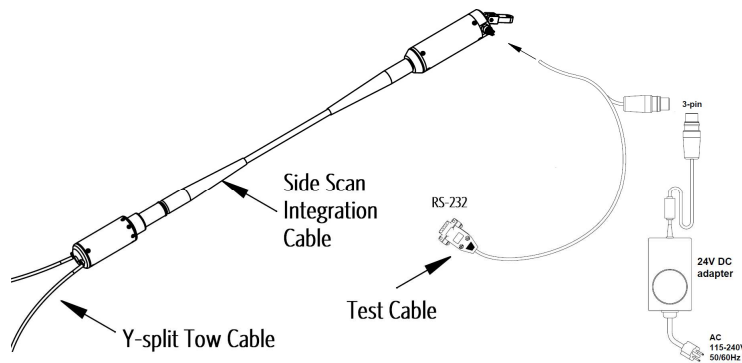


Figure 2-5 - Side Scan Sonar FSK (transceiver) interface connection diagram for a single Synapse or a Synapse gradiometer

2.3 Synapse gen.2 AUV/ASV/ROV interface

Direct RS-232 connectivity enables connections to uncrewed and autonomous platforms such as ASV, AUV and ROV. While such platforms vary in their characteristics, a general overview of the integration options is shown in the diagrams below. AUV-towed applications require a tow cable termination and a vehicle-specific mechanical coupling link that attaches to the cable. ROV applications may involve a rigid mechanical mounting of the magnetometer, and can use a simplified interface cable without a tow connector termination.

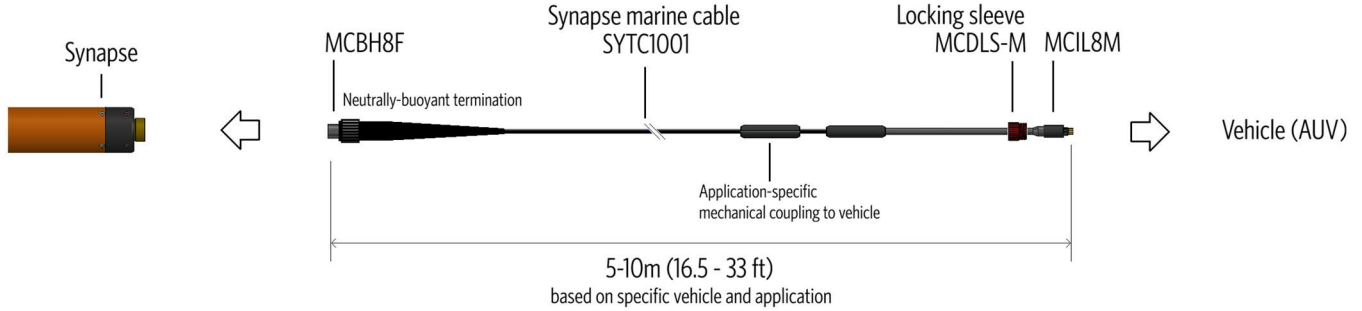


Figure 2-6 - AUV integration features a standard Synapse tow connector as well as a vehicle-specific mechanical coupling to the cable.

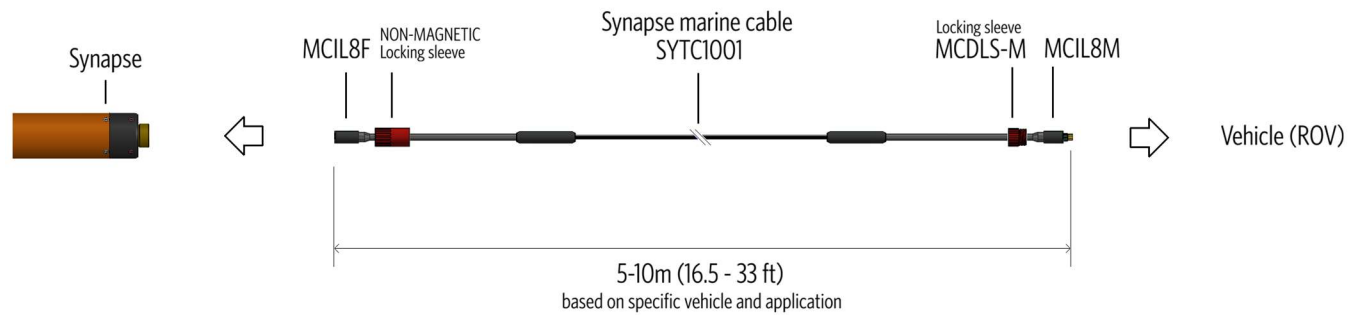


Figure 2-7 - ROV integration features a simplified interface cable and relies on a rigid mounting of the magnetometer to the ROV frame.

2.4 RS-232 Interface

Synapse gen.2 magnetometer as well as the isolation transceiver use the following RS-232 settings:

RS-232 Baud Rate: 115200 baud Data bits: 8, Stop bits: 1, Parity: None

Transceiver RS-232 baud rate can be configured through the transceiver settings menu, by sending the command **\$menu,0**, in the RS-232 terminal. See Section 4.14.2 for details.

Note that older isolation transceivers (prior to 2025) do not support the \$menu command and use Ctrl+B instead for RS232 baud rate settings. These transceivers are only compatible with Synapse gen.1 and earlier products (SeaSPY and SeaQuest). See Section 4.2 for details.

Synapse magnetometer RS-232 settings can be configured through the towfish menu, by sending the command **\$menu,<SN>**, where SN is the unit serial number (e.g. 16042). When only a single towfish is connected, or when communicating with the master node, the command can be abbreviated to: **\$menu,,** (note that replacing SN with 0 redirects the command to the transceiver i.e. node zero). Refer to Section 6 for Synapse command protocol overview.

Baud rates below 9600 are not recommended for use with Synapse magnetometers and can lead to communication delays and errors. When faced with a system bandwidth limitation consider changing the Synapse data format from Full to Compact or Base64 compressed, which allows more efficient use of the available bandwidth. These settings are accessible via the BOB Synapse configurator screen, or by sending the command **\$data,<SN>,<D>** where <D> indicates the data format (0: standard, 1: compact, 2: Base64 compressed)

e.g. **\$data,,1** will set the master node data output to Compact, while **\$data,,** will query the current data format setting.

2.5 Synapse gen.2 electrical specifications

Synapse gen.2 supports dual telemetry: FSK (pins 6 and 7), and RS-232 (pins 1,8,7). CAN bus is only necessary when connecting multiple Synapse units together.

Table 1 - Synapse gen.2 towfish electrical connector wiring (front MCBH8M connector)

Pin	Function	Notes
1	RS-232 – MAG > PC	RS-232 Tx/Rx pair must be shielded
2	CAN H	CAN H/L lines should be a twisted pair
3	CAN L	
4	CAN GND	Must be isolated from power GND and RS-232 GND
5	N/C	
6	V+ / FSK +	20-55V range. 24V recommended.
7	GND (Power, FSK, RS-232)	Must be isolated from CAN bus GND
8	RS-232 – PC > MAG	RS-232 Tx/Rx pair must be shielded

Table 2 - Synapse gen.2 towfish electrical specifications

Parameter	Min	Typ.	Max
Input voltage	20 V	24 V	55 V
Input power	3.5 W	5.5 W	7.0 W*

*Note: When powered through the FSK isolation transceiver.

2.6 Synapse LED: Node and Network Status

Each Synapse magnetometer has a bright RGB color status LED on the front bulkhead which indicates the state of its operation.

The LED shows a combination of background color and a flash color, which may be of variable duration. Together, the flash and background colors communicate information about the state of the node as well as its connectivity to the array network.

In general the background color reflects the state of the sensors in the node, while the flash color reflects the state of the network.

Table 3 - Synapse LED states

LED Background color	Sensor status
BLUE	Magnetometer warming up (wait 60-90 sec), or is unable to tune to the magnetic field (check towfish orientation)
GREEN	All sensors are operating correctly
ORANGE	Magnetometer sensor malfunction
CYAN	Magnetometer sensor low signal
LED Flash color	Node network status
WHITE	Node operating as a network client
RED	Node operating as the network master
CYAN	Operating as a network client, but not synced to a master (temporary state)

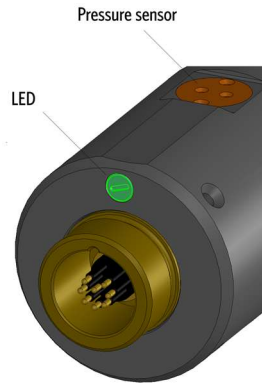


Figure 2-8 - Synapse status LED location on the magnetometer towfish

2.7 Synapse Transverse Gradiometer

The Synapse transverse gradiometer system consists of two Synapse magnetometers mounted on a 1.5m-wide horizontal transverse gradiometer frame. Each of the magnetometers is equipped with depth sensor, altimeter, IMU and leak detector.

The horizontal aluminum frame is flooded with water during operation. An optional frame filled with syntactic foam is available for applications requiring neutral buoyancy (e.g. AUV and side scan sonar applications).

For roll stability, the frame is equipped with vertical fins holding float and keel pods.

A Y-split tow cable adapter is used to connect the gradiometer pair to the tow cable, or side scan sonar integration cable. When used independently without a frame, each Synapse magnetometer can be connected directly to either a tow cable or a side scan integration cable.

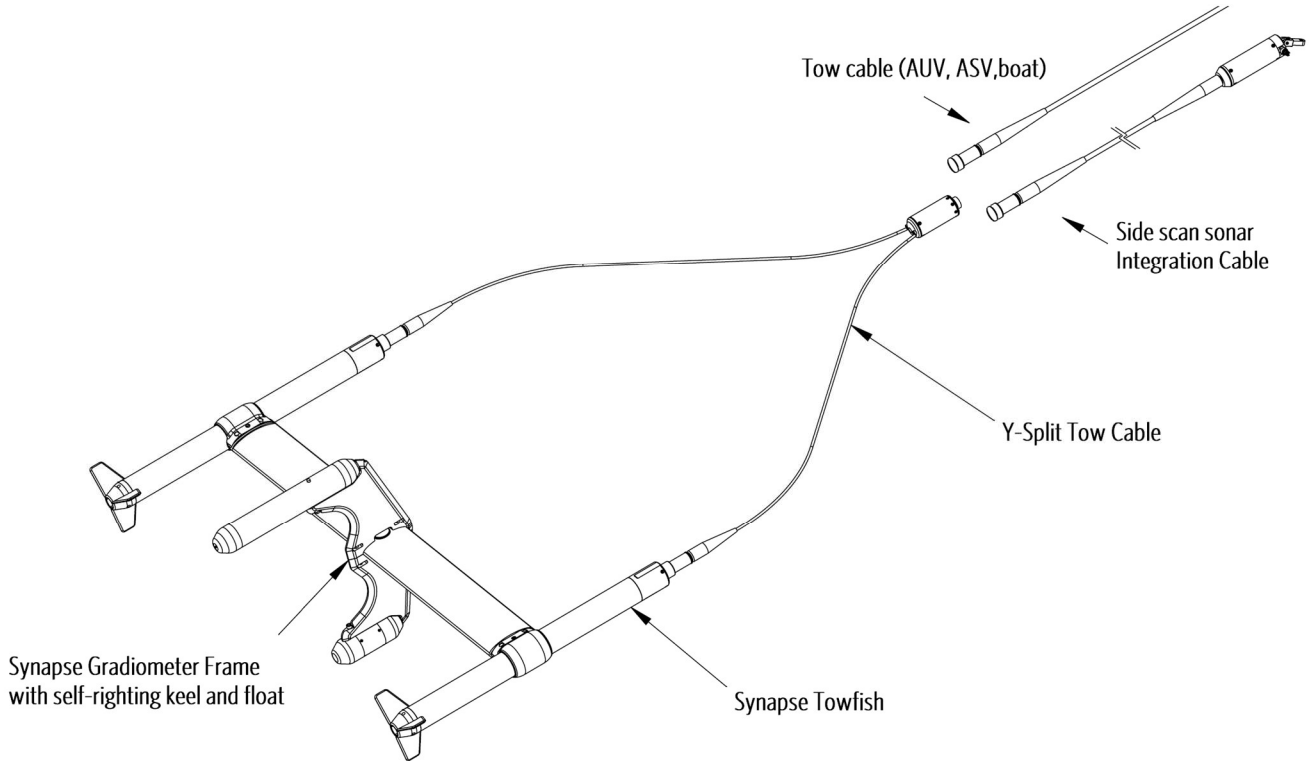


Figure 2-9 - Synapse Transverse Gradiometer connection diagram

2.8 Gradiometer Frame Assembly

The horizontal transverse gradiometer frame consists of three main components that need to be assembled prior to deployment:

- Horizontal 'wing' with magnetometer collar clamps at both ends
- Vertical fin with an air-filled float pod
- Vertical fin with a weighted keel pod

The 'wing' is symmetrical and does not have a preferred orientation. However the magnetometer collars contain bolts for clamping over the towfish only on one side (see Figure 2-11), that may be more convenient to adjust when facing upwards.

IMPORTANT: Refer to Figure 2-12 for proper frame alignment during assembly.

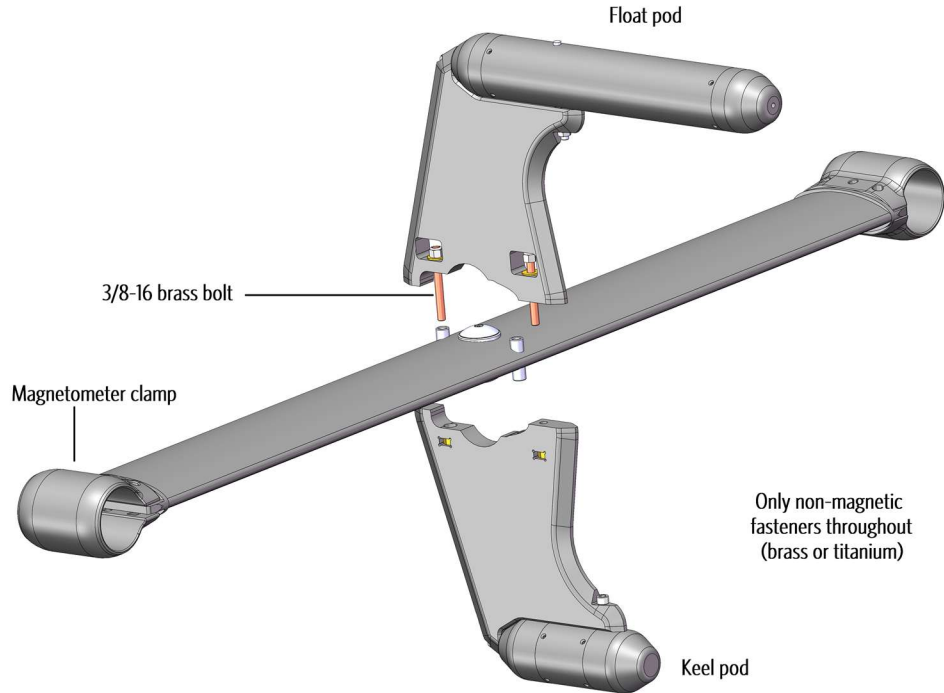


Figure 2-10 – Gradiometer frame components and assembly.

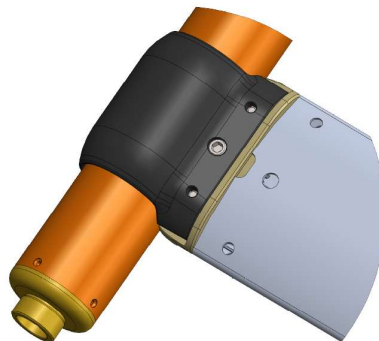


Figure 2-11 - Magnetometer collar clamps contain a single bolt (centered) that requires adjusting when clamping over the tube, and two bolts that attach the collar permanently to the 'wing' that do not require adjusting.

The final step in the assembly is proper alignment of the two magnetometers relative to the frame and to each other.

Both magnetometer should be positioned at the same distance from the frame collars, and the tail fins on both need to be aligned closely to ensure correct operation.

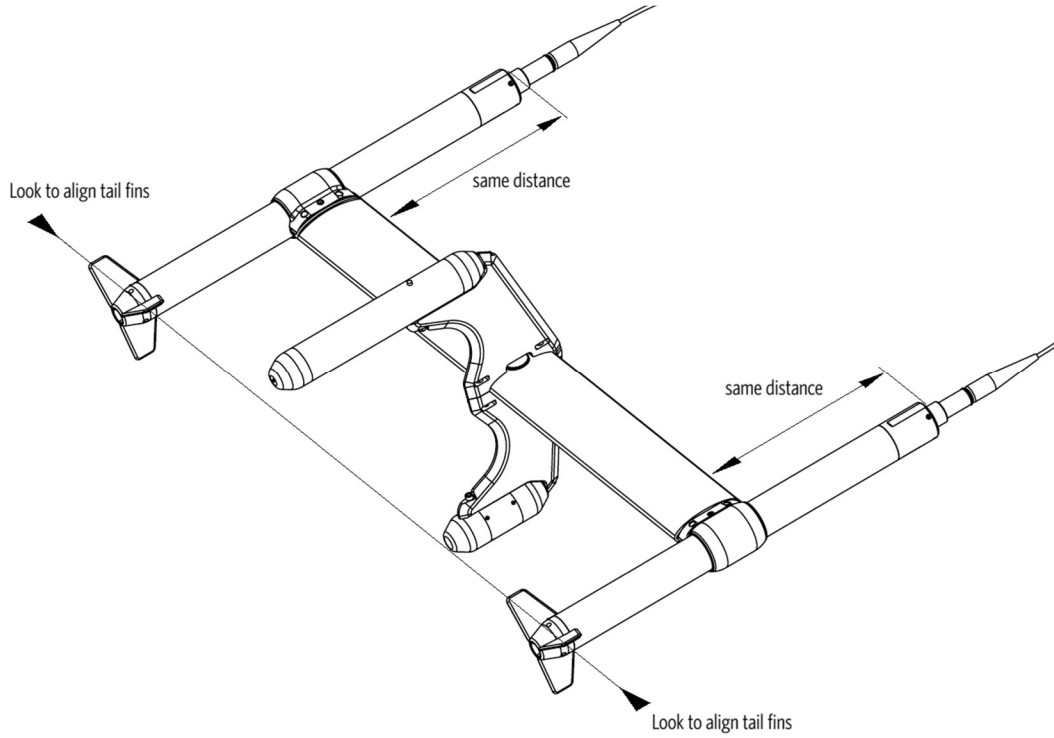


Figure 2-12 – Proper alignment of the gradiometer components

3 Operating the Synapse gen.2 system using BOB Software

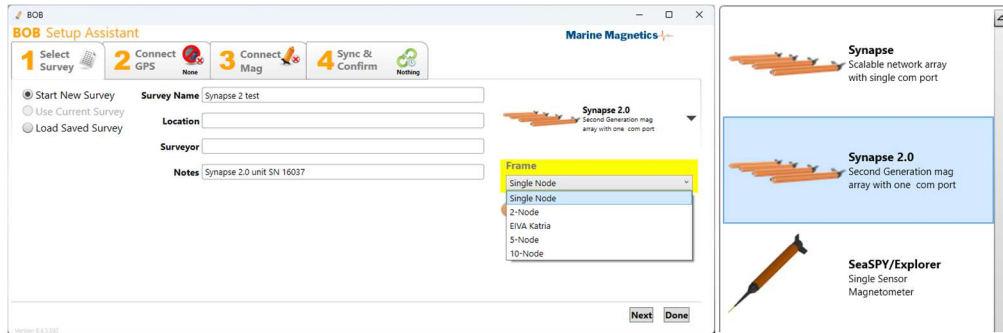
Marine Magnetics BOB is the magnetometer interface software that provides data logging, survey planning and data correction features for all Marine Magnetics products. Additional processing and data visualization features can also be activated using the BOB Analytic Module (BAM) license. Free BOB software is available from the following URL: <https://bob.marinemagnetics.com/>

Described below are BOB Setup Assistant steps for configuring a new Synapse system survey.

3.1 Setting up a new survey

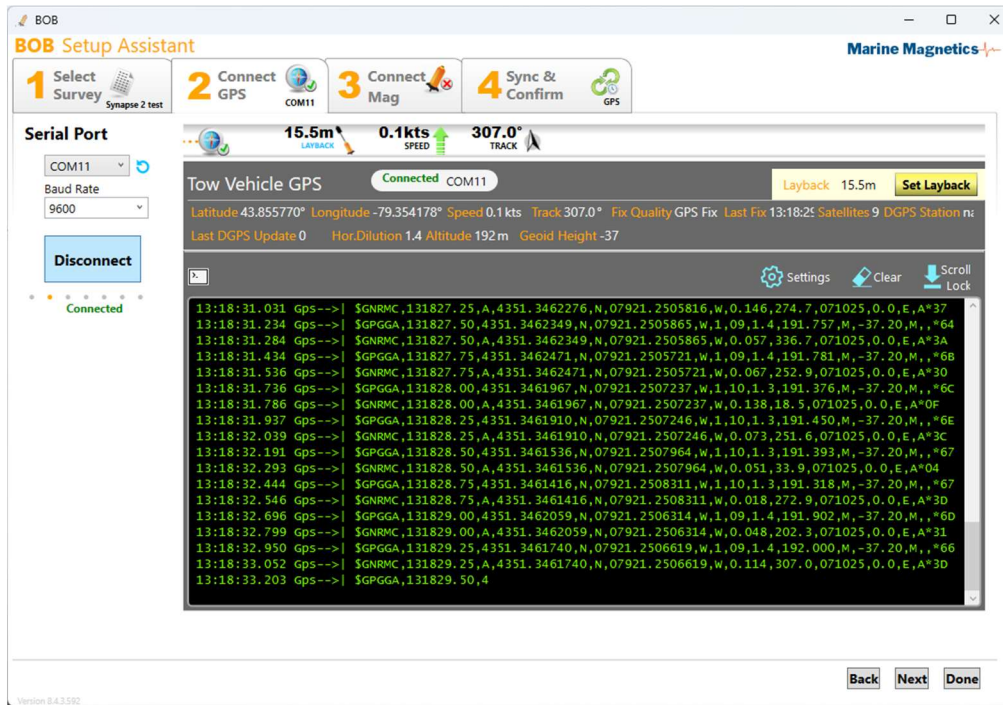
3.1.1 Create a new BOB survey and select the appropriate magnetometer type

Due to the inherent flexibility of Synapse arrays, BOB requires the array 'frame' to be configured before proceeding with data collection. The array configuration may include 1 or more nodes and can use various frames and arrangements. Once the magnetometer type is selected and the array size is configured, the number of nodes cannot be changed without creating a new survey.



3.1.2 Connect to the survey GPS via COM port.

BOB supports RS-232 or virtual COM port GPS input, and uses only GGA, RMC and ZDA NMEA data messages. A 5Hz or higher update rate is recommended. Default Layback is set to 15.5m, and can be modified later via the BOB GeoPlot window, as well as during post-processing.



3.1.3 Connect to the Magnetometer via COM port.

BOB supports RS-232 or virtual COM port connections, and communicates with the isolation transceiver, or directly with Synapse gen.2 via the RS-232 port. Use 115,200 baud rate for Synapse systems. Refer to Section 4 for details on RS-232 baud rate configuration.

Synapse magnetometers are designed to start sampling at 10 Hz upon power-up, and may require up to 1 minute for all sensors to begin data output.

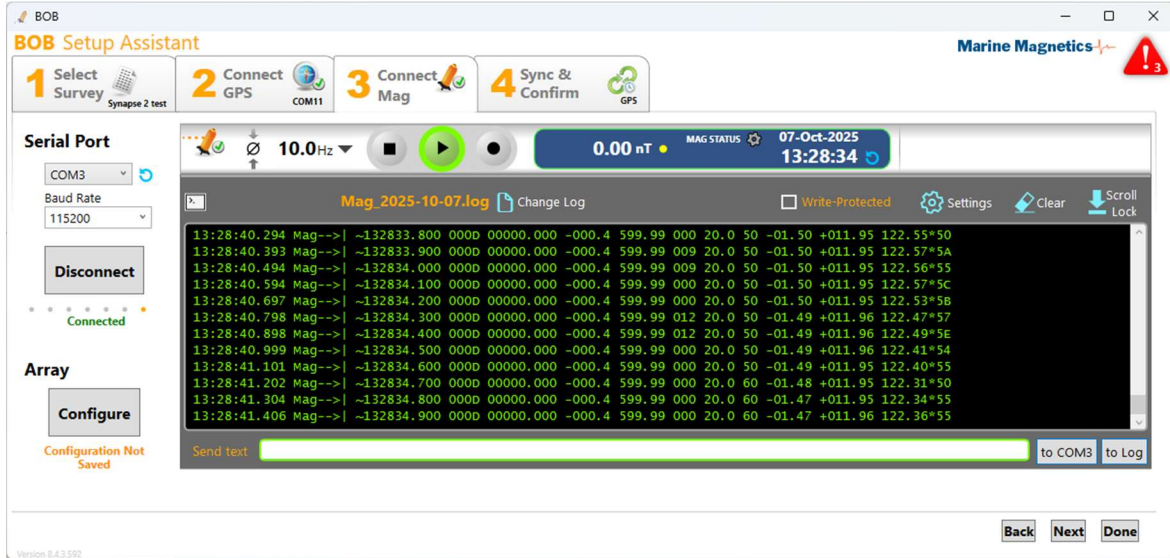


Figure 3-1 - Typical data output of a single Synapse magnetometer during start-up

Note the 'Send text' box below the terminal window introduced in BOB 8.5. It allows sending whole commands as a string. Using the keyboard up arrow will recall recently used commands. Refer to Section 6 for Synapse command protocol overview.

Prefixing the string with // will turn it into a comment in the log file.

BOB keeps two sets of diagnostic logs for backup purposes:

- **mag log**, containing magnetometer data plus system time stamps on the left, and captures all commands sent to the magnetometer COM port, as seen in the terminal window.
- **raw mag log**, containing only the data received from the magnetometer COM port and nothing else

3.1.4 Configure Synapse towfish or array

Before any data can be stored, the array configuration must be checked and saved. BOB Synapse Configurator provides an intuitive interface for:

- assigning individual Synapse units to specific slots on the frame (for arrays)
- selecting the master unit (for arrays)
- configuring the internal sensors in each Synapse unit
- selecting the data format (Normal, Compact or Base64 compressed)
- selecting an active altimeter (when more than one altimeter unit is connected)

The Synapse configurator can be accessed from Step 3 of the Setup Assistant, as well as from the mag status panel beside the data sampling controls.

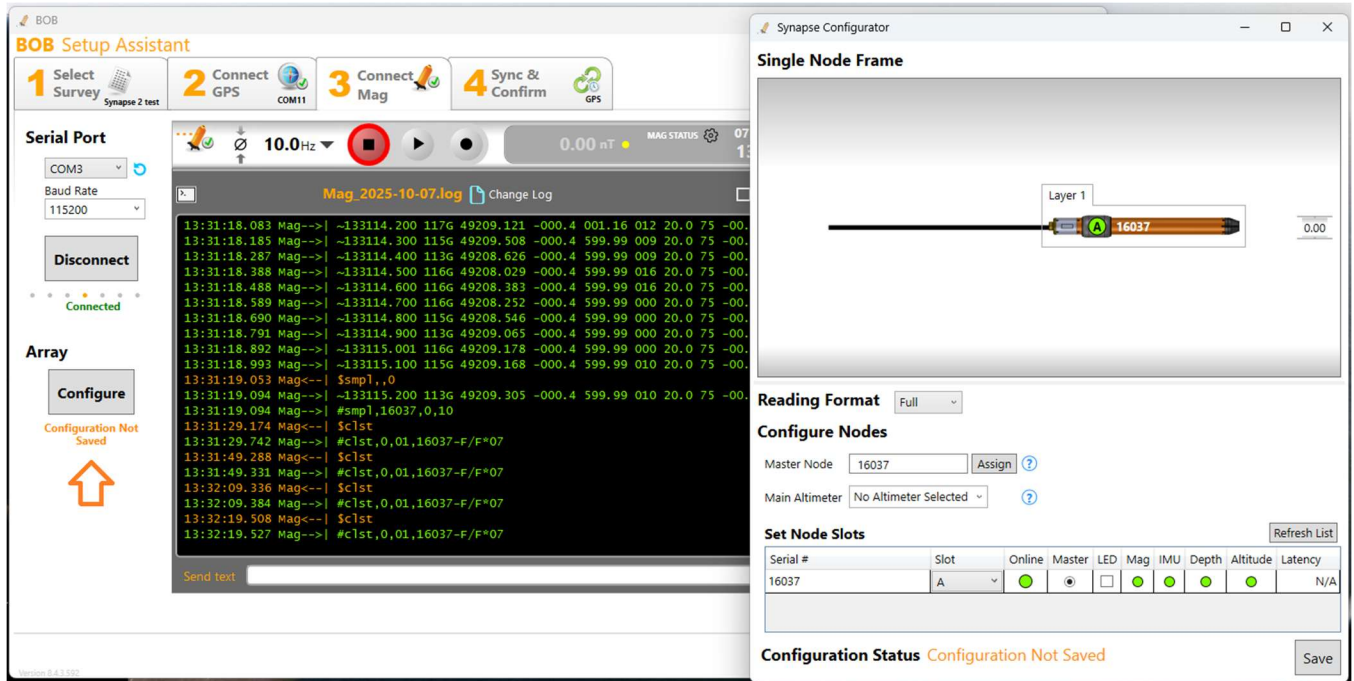


Figure 3-2 - Synapse configurator can be used to assign each Synapse node to its slot on the array frame, and configure internal sensors

All Synapse array systems require that a single Master node be assigned. Any node in the array can be assigned to act as a master node, but only one Master node can be present in the system for communication to work.

In early Synapse models the master node had to be assigned manually.

Synapse gen.2 makes this process automatic and seamless by introducing smart master/client arbitration. A single master node will automatically get selected shortly after the system is powered up. As nodes get added to or removed from the array, the master node gets assigned automatically as needed.

The master node will combine all the readings from the entire array into a single time-stamped data string and communicate with the isolation transceiver or the host computer via RS-232. The master node is always the first one to appear in the data string.

The current master node is identified in the configuration window and can be changed if needed.

Please refer to Section 5 for details on Synapse Data Format.

Synapse Configurator lists the currently connected nodes with their corresponding peripheral configurations (Magnetometer, IMU, Depth and Altimeter). The indicators also serve as ON/OFF controls.

The configuration commands being sent to the Synapse by the configurator can be monitored in the terminal window, and will be captured in the diagnostic logs. Refer to Section 6 for Synapse command protocol overview.

NOTE: The configuration needs to be saved in order for BOB to record incoming data into the survey database. However, the diagnostic logs (seen in terminal view) are always saved as long as the COM port connection is open.

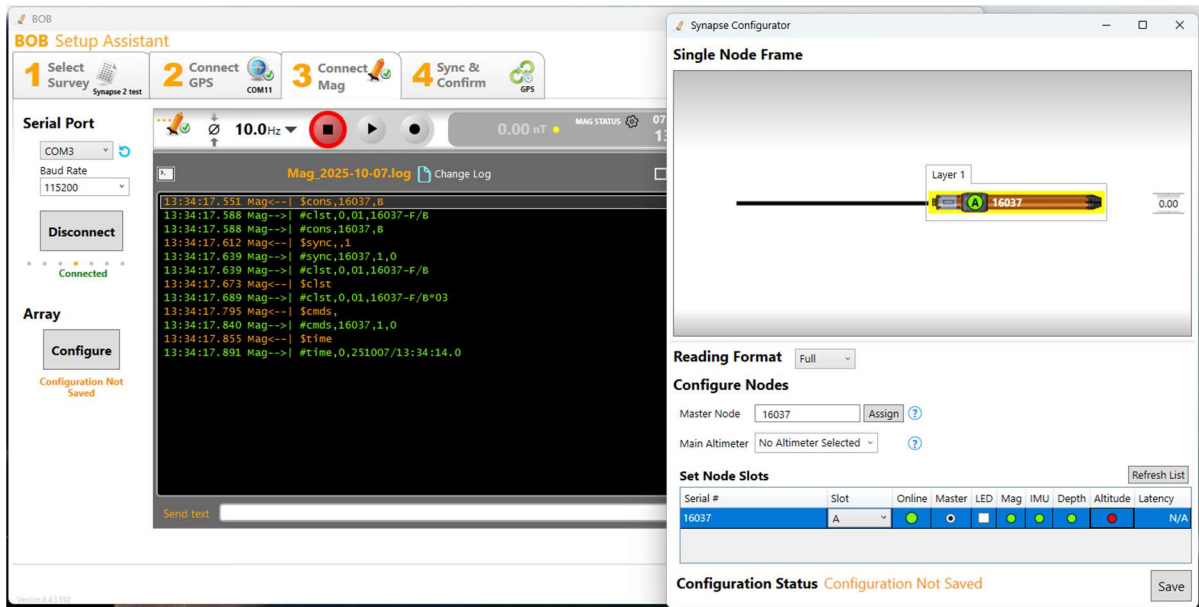
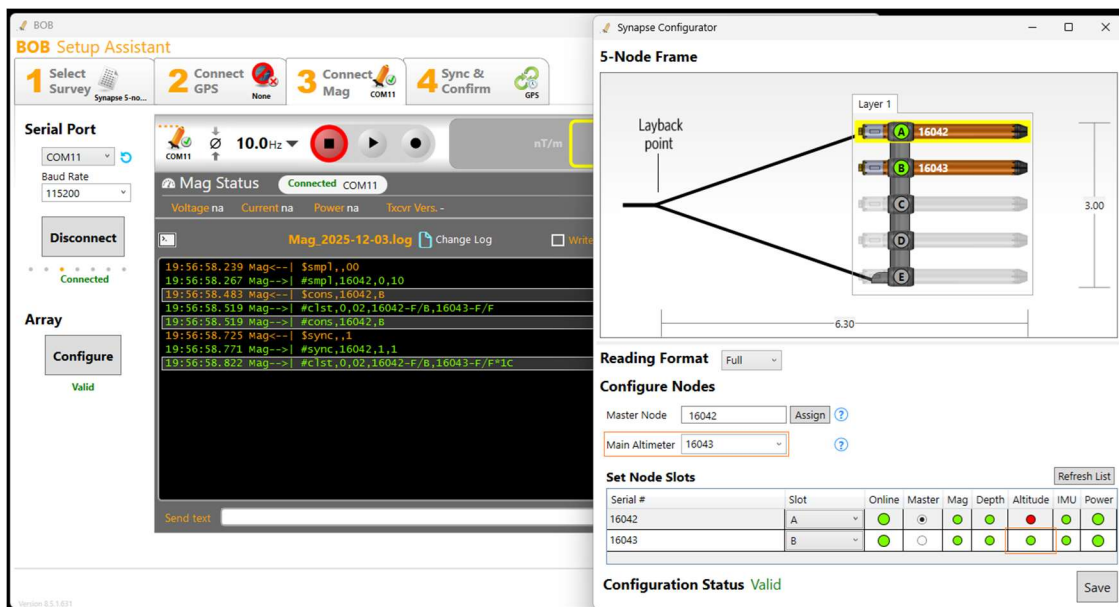


Figure 3-3 - Synapse configurator provides indicators/controls for internal sensors such as Magnetometer, IMU, Depth and Altimeter.

Configuring array frames requires selecting the correct frame preset in Step 1 of Setup when creating a new survey, and then assigning specific unit SN's to corresponding slots on the frame. When multiple altimeters are present it is recommended to enable only those required, to avoid interference. BOB will use the dimensions of the frame to compute individual towfish coordinates for each of the frame slots relative to the layback point that represents the end of the soft tow cable.



3.1.5 Finalizing the equipment configuration in BOB

The final step 4 in BOB Setup Assistant presents a summary of the survey parameters and COM port connections, and offers options for time synchronization reference device for the magnetometer towfish.

For best results the magnetometer should be synced to GPS (UTC) time. This requires a GPS connection.

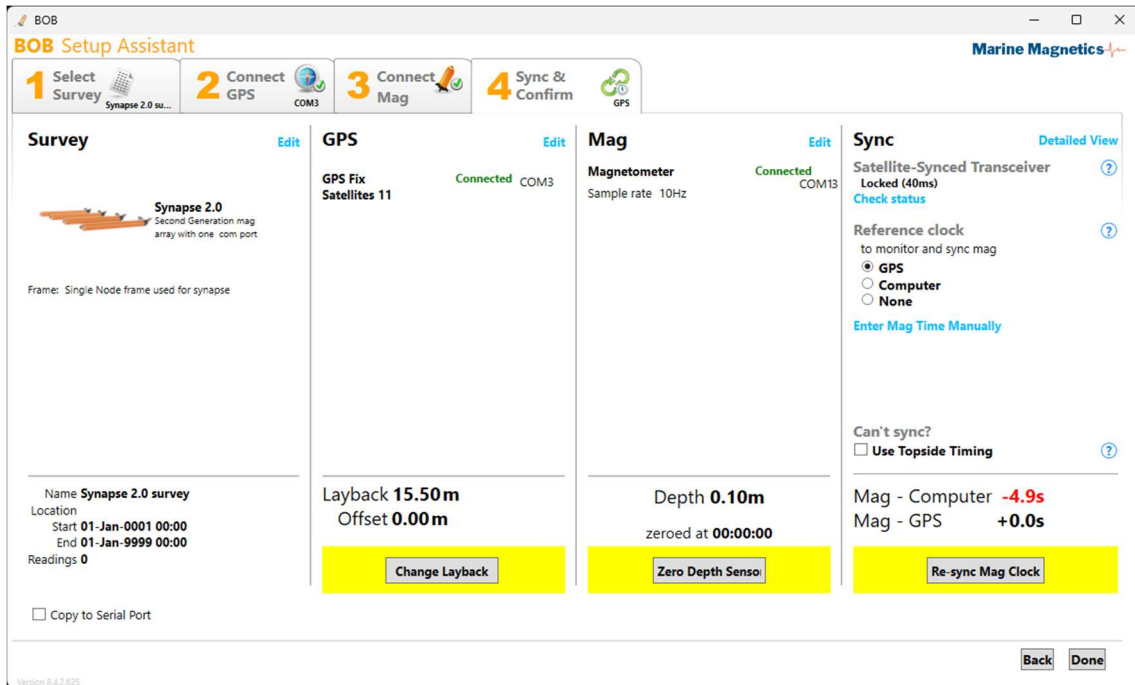
If your isolation transceiver contains an integrated GPS (or is connected to an external GPS), it will automatically sync the magnetometer clock to satellite (UTC) time and maintain the sync as long the transceiver is able to obtain satellite lock.

The high-power underwater isolation transceiver as well as the side scan interface transceiver feature dedicated NMEA GPS inputs for the purpose of maintaining precise synchronization with satellite time.

Please note that a separate dedicated survey GPS is needed for tracking position of the vessel and towfish or array, while the transceiver GPS is only used for time synchronization.

In the absence of a GPS connection (e.g. during lab testing), the Mag clock can be set to either PC time or entered manually. For best results ensure that your PC's date and time are set accurately or configured to automatically sync to Internet time, and that your time zone is configured correctly to help BOB determine the UTC time.

The Topside Timing option is reserved for situations which lack any means of setting the magnetometer date and time. When Topside Timing is enabled, BOB will time stamp incoming data using the Windows system time. This method of time stamping is less accurate and may result in variable latencies throughout the data capture. Original magnetometer reading time stamps are also preserved, and are available during data export to assist with data processing, along with System time and GPS time.



3.2 Magnetometer data display in BOB

BOB user interface is divided into two windows:

- Main window containing the sensor profile plot, data capture (sampling) controls and a table of data readings below
- GeoPlot window displaying the location of the survey equipment in a map view

GeoPlot window features a multi-layered map view of the collected data and real-time magnetometer position. With a BAM license activated, the data can be visualized as interpolated maps such as Total Field, Analytic Signal and Partial Gradient maps. A background image or navigational chart may also be added (must be in GeoTiff format). Please refer to BOB User Manual for more information.

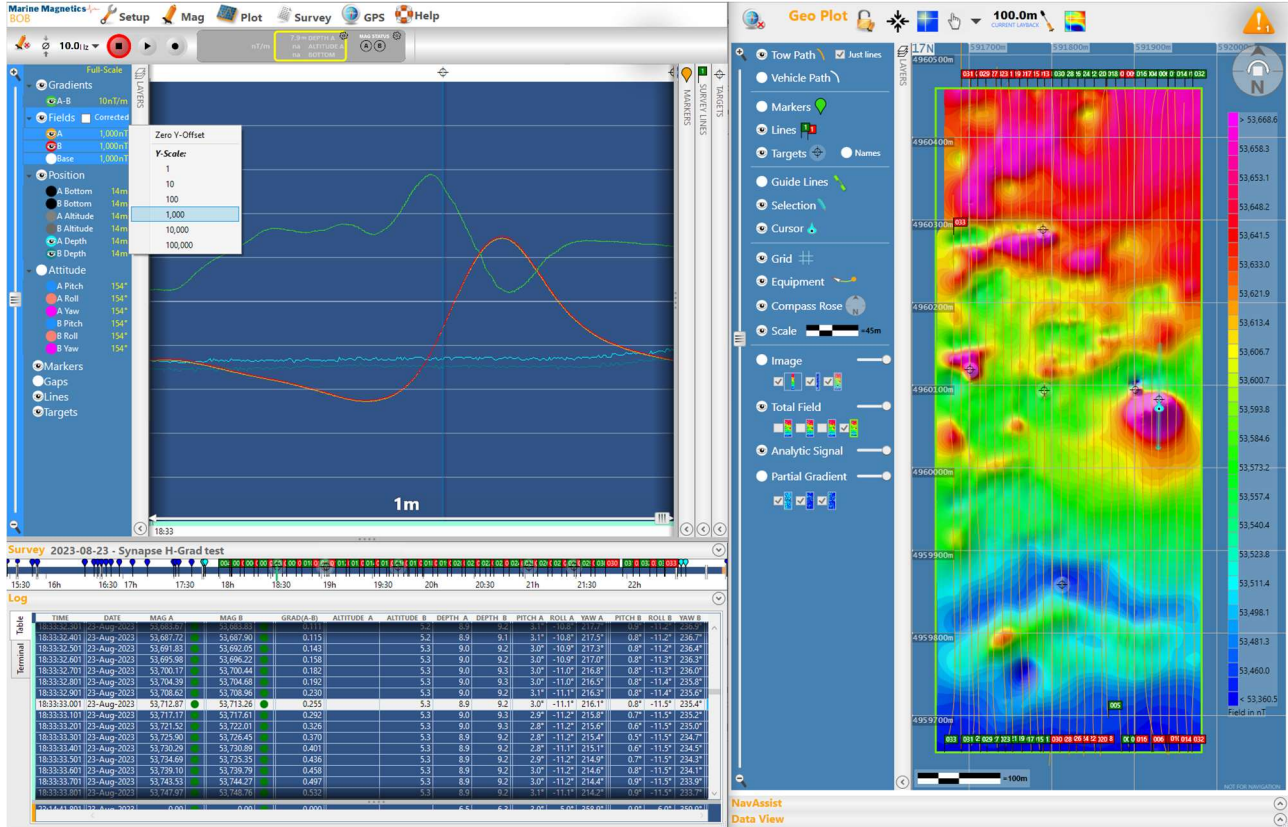


Figure 3-4 - Typical BOB user interface when reviewing existing Synapse Horizontal Gradiometer data and interpolated maps generated in BAM.

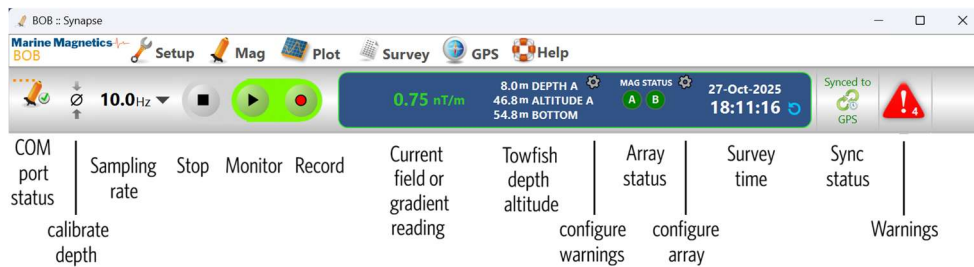


Figure 3-5 - New layout of the survey control panel in BOB 8.5

3.3 Profile Plot: Real-time and Review panes

The Profile Plot window in BOB contains a vertical divider that can be used to split the view into Review pane (left) and Real-Time Readings pane (right). The Horizontal scale (time span) can be set separately for each pane using the horizontal slider at the bottom of each pane. The timeline bar below the profile plot will highlight the time interval currently displayed in the Review Pane.

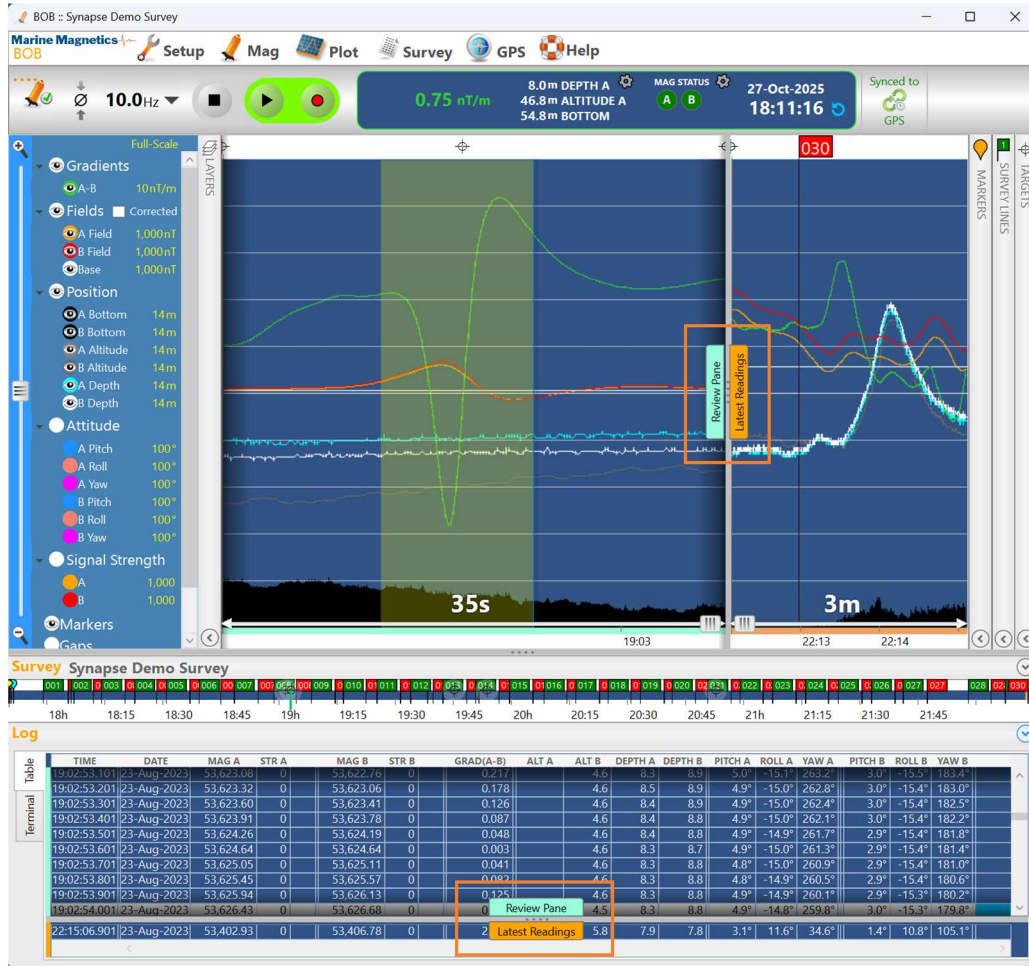


Figure 3-6 - BOB Profile Plot can be divided into Review (left) and Real-time (right) data panes, with different time spans for each. The Log table below the plot can be similarly divided with a horizontal bar.

Synapse magnetometer data is grouped into Fields, Positions and Attitude signal groups.

The vertical scale for each of the signal groups can be selected individually or as a group by selecting the group heading in the Layers panel and right-clicking on it. You can also multi-select individual components by holding down the *Ctrl* or *Shift* keys.

The vertical slider to the left of the Layers panel can also be used to adjust the vertical scale of the selected signal or group.

Data profile traces of the Fields group can be dragged up and down with a mouse (while holding down the *Shift* key) as well as scaled via the layers panel, for convenience and comparison. Data traces in Position and Attitude groups can only be scaled, but not dragged, as they have predefined reference "0" positions. When viewing the depth signal, the top of the profile window represents the water surface, and sea bottom is estimated as the sum of depth and altitude. Pitch and Roll traces are centered to display both positive and negative deviations.

Please refer to the BOB User Manual for further details on all features and functions.

3.4 Calibrating the depth sensor zero level

It is recommended to calibrate the zero-depth level of the pressure sensor at the start of each survey. Submerge the magnetometer towfish for a few minutes to allow it to adjust to the water temperature, then bring it out of the water to set the ambient pressure as zero depth level.

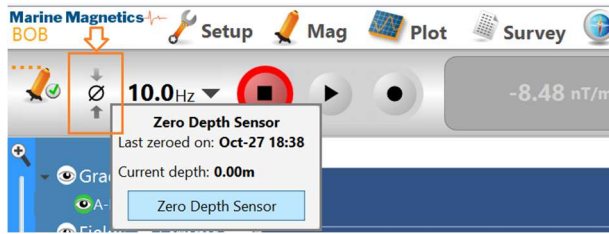


Figure 3-7 – Use the dedicated button for calibrating the depth sensor zero level prior to each survey

3.5 Towfish Attitude Indicator

Real-time orientation of the Synapse magnetometer or gradiometer array can be monitored using the Attitude Indicator display, which can be accessed through the Mag menu. The indicator presents the horizon from the point of view of the towfish looking forward in the direction of travel.

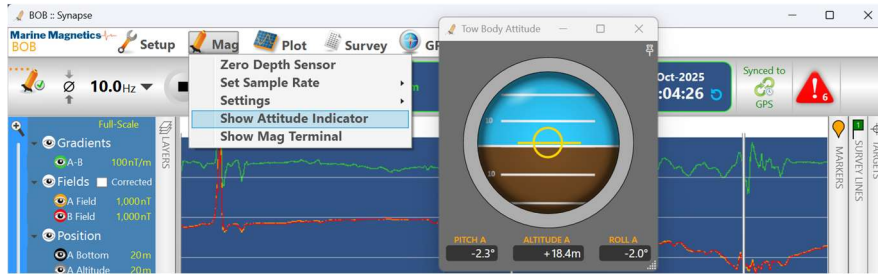


Figure 3-8 - The Attitude Indicator displays Pitch, Roll and Altitude readings from the active node whenever the Synapse magnetometer is actively sampling.

3.6 Layback distance estimation for optimal magnetometer positions

BOB software computes the position of the magnetometer sensor(s) during the survey by applying a layback offset behind the point with known coordinates (e.g. GNSS antenna). The layback is a curvilinear horizontal offset measured along the modified curve of the vessel's path. For best positional accuracy the layback needs to include all longitudinal and transverse offsets between the GNSS antenna and the tow cable-out mark. The layback does not include the vertical offset due to towfish depth.

Array frame dimensions can be configured into a frame preset that defines the X,Y and Z offsets of every magnetometer frame slot relative to the end of the tow cable (layback point). Please contact MMC with your frame dimensions and we will provide you with a frame preset for BOB.

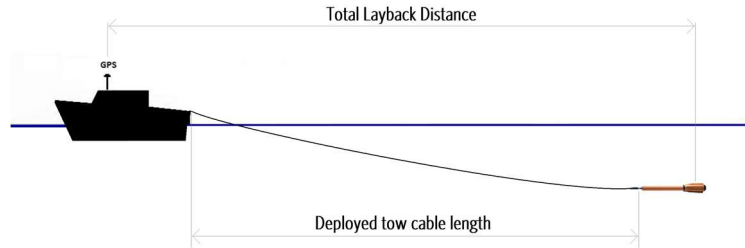


Figure 3-9 - Layback distance estimation for the simple case of a towed magnetometer without a frame on a soft tow cable

In Side Scan Sonar (SSS) integrations, the best positioning accuracy for the magnetometer may be obtained by applying the layback to the position of the SSS instead of the vessel's GNSS. When a USBL-corrected SSS position is available in real time in NMEA format, that data can be used by BOB instead of GPS data. Combined with a fixed offset equal to the integration cable length, BOB will compute the position of the magnetometer.

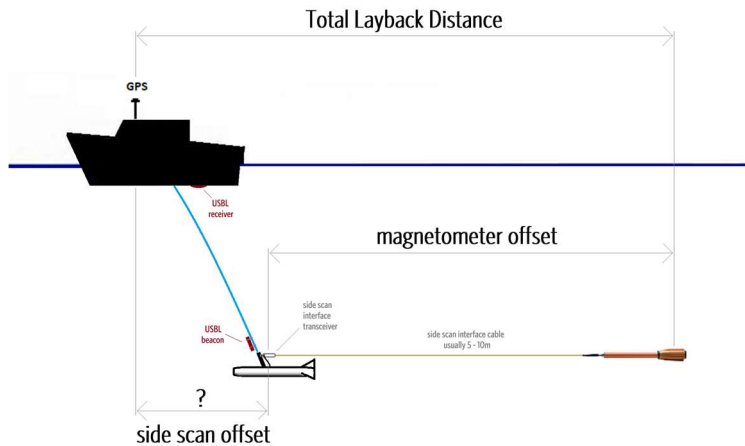


Figure 3-10 - Layback distance estimation for the Side Scan Sonar integrations is subject to a variable side scan offset. It is recommended to use the USBL-corrected position of the SSS instead, and apply a short layback corresponding to the magnetometer offset.

NOTE: Layback point represents the end of the tow cable, and can be used as an estimation of the single magnetometer's position. For gradiometers and array frames, BOB will use the dimensions of the frame to compute individual positions for each slot on the frame.

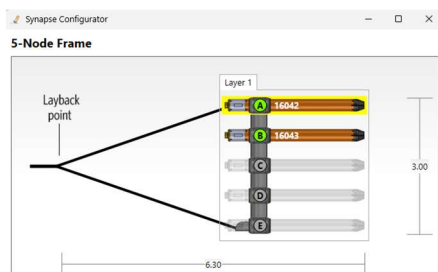


Figure 3-11 - Layback estimation for array frames

3.7 Saving and exporting survey data

All data captured by BOB gets stored in the BOB survey database whenever sampling is enabled, in addition to being captured in the diagnostic logs. The database is stored internally and cannot be accessed directly, but a copy of it can be backed up to a file for archiving or exported in CSV format for processing in 3rd party software.

To create a backup copy of the BOB survey database, use **Survey > Backup to File**. This will create a file with the extension .MMS, that will contain all data captured during the survey, including all markers, targets, notes, layback settings, background charts and BAM maps. This file can be imported into a BOB installation on another computer for sharing or post processing.

To export survey data for post-processing in 3rd party software, use the menu selection **Survey > Export Survey Log**. This option offers a flexible interface for selecting specific data channels and corrections to be applied and exported. The resulting file will be ASCII text formatted as CSV (Comma Separated Values), or a space-separated value file.

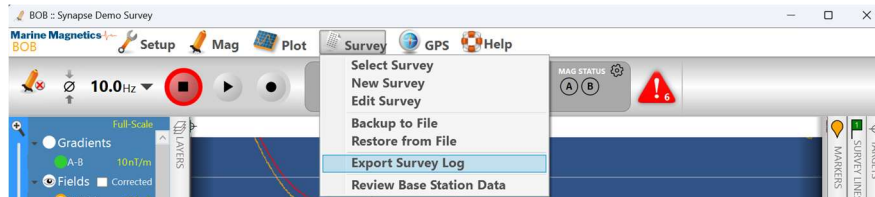


Figure 3-12 - Survey data can be backed up as a BOB-compatible backup file (MMS) or exported in universal CSV text format

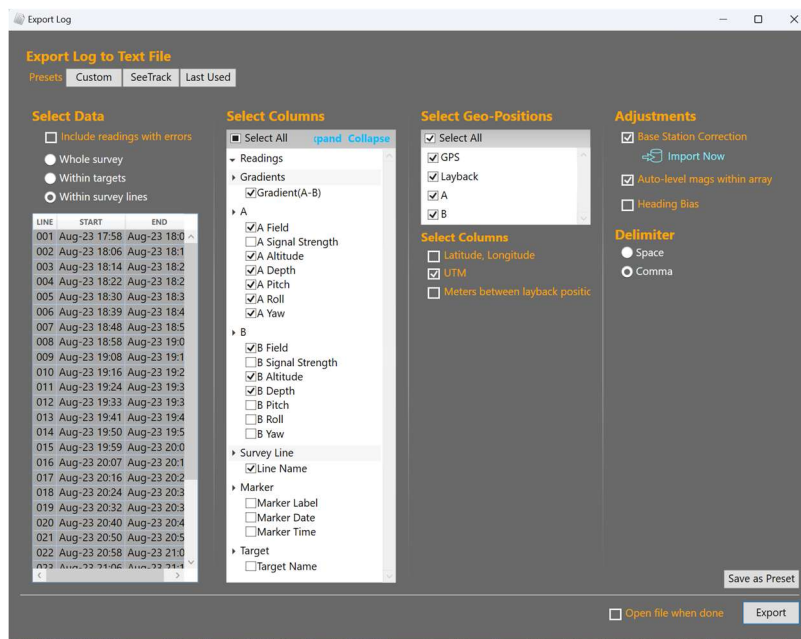


Figure 3-13 - Data export interface offers a flexible selection of available data channels, positions and corrections

3.7.1 Survey Export Log format – Description of available data columns and units

(*) represents n/a

Column	Value	Description
Reading_Date	23-Aug-2023	Date of the sample reading, magnetometer clock
Reading_Time	17:59:00.001	Time of the sample reading, magnetometer clock
Gradient(A-B)	-1.702	Measured gradient, nT/m (difference between raw fields at A and B slots divided by the separation between slots (frame width)).
A_Field	53664.055	Magnetic field at frame slot A (nT)
B_Field	53666.608	Magnetic field at frame slot B (nT)
A_Altitude	*	Magnetometer Altitude at frame slot A (m) (if enabled)
B_Altitude	4.5	Magnetometer Altitude at frame slot B (m) (if enabled)
A_Depth	8.5	Magnetometer Depth at frame slot A (m)
B_Depth	8.6	Magnetometer Depth at frame slot B (m)
A_Pitch	2.75	IMU Pitch angle at frame slot A (deg). Positive is Nose-down. Includes IMU gyro correction.
A_Roll	-5.08	IMU Roll angle at frame slot A (deg). Positive is to Starboard. Includes IMU gyro correction.
A_Yaw	245.79	IMU Yaw angle at frame slot A (deg). Includes correction based on IMU's MEMS compass.
B_Pitch	1.85	IMU Pitch angle at frame slot B (deg). Positive is Nose-down. Includes IMU gyro correction.
B_Roll	-5.54	IMU Roll angle at frame slot B (deg). Positive is to Starboard. Includes IMU gyro correction.
B_Yaw	240.23	IMU Yaw angle at frame slot B (deg). Includes correction based on IMU's MEMS compass.
Reading_ID	74539	Unique Reading ID since start of database
System_Date	23-Aug-2023	Date of the sample reading, Windows PC clock
System_Time	17:59:01.441	Time of the sample reading, Windows PC clock
Line_Name	L004	User-marked survey line (if marked)
Marker	*	Name of the note marker corresponding to current time (if marked by user)
Marker_Date	*	Date corresponding to the marker
Marker_Time	*	Time corresponding to the marker
Error		Error code identifying the magnetometer sensor operating state (A,...,F). Blank if no errors.
Target_Name	*	Name of the anomaly target corresponding to current time (if marked by user)
GPS_Latitude	44.79073146	Latitude of the GPS receiver (Boat) location. WGS84
GPS_Longitude	-79.83807075	Longitude of the GPS receiver (Boat) location. WGS84
GPS_Easting	591910.60	UTM Easting of the GPS location (m), WGS84
GPS_Northing	4960360.37	UTM Northing of the GPS location (m), WGS84
GPS_Zone	17N	UTM Zone
Layback_Latitude Layback_Longitude Layback_Easting Layback_Northing	(see above)	Coordinates of the end of tow cable (layback point, or single towfish location). WGS84. See Note below on specific component positions.
A_Latitude A_Longitude A_Easting A_Northing	(see above)	Coordinates of the array node A on the selected frame. WGS84. See Note below on specific component positions.
Heading_Bias	-0.000	Heading bias applied based on GPS heading (as configured in the heading correction dialog)
Fish_Heading	182.4	Towfish heading (based on GPS heading, corrected for layback)
Base_Station_Correction	-5.906	Base station correction (nT) (Base Station Field less the average value for the base data imported)
Base_Station_Field	53671.211	Base Station Field (nT) interpolated for this point in time using available base station readings
A_Field_Leveling	1.304	Sensor-specific levelling correction, computed individually for each marked survey line
B_Field_Leveling	-1.304	Sensor-specific levelling correction, computed individually for each marked survey line
A_Field_(Corrected)	53671.265	Corrected magnetic field at frame slot A; includes all selected corrections applied (Base station, Heading bias, Automatic Sensor Leveling)
B_Field_(Corrected)	53671.211	Corrected magnetic field at frame slot B (nT). Same correction options as above.
Corrected_Gradient(A-B)	0.037	Magnetic gradient derived from corrected magnetic fields at slots A and B (nT/m). (Difference between corrected fields divided by the separation between slots (frame width)).

Notes: Latitude and Longitude of the Towfish and Mag nodes (slots) are computed by BOB based on the position of the GPS (Boat) and the specified layback distance, and accounting for the curve of the tow cable and the vessel path. While GPS (Boat) latitude and longitude remain fixed in the database, you can re-compute mag coordinates at any time by entering a new layback distance in BOB.

“Layback” represents the end of the single tow cable. For gradiometers, this represents the position of the head of the Y-split cable. Use the slot-specific coordinates (e.g. A_Latitude) for positions corresponding to specific magnetometer sensors within a frame.

4 Isolation Transceiver for FSK telemetry

The isolation transceiver supplies stable clean electrical power to the towfish and converts the host RS-232 data interface to FSK 2-conductor interface for communication over long tow cables. Second generation transceivers introduced in 2023 include an integrated GNSS for synchronizing the magnetometer to UTC time. An external GNSS NMEA RS-232 input connector is also provided, for installations where the transceiver is not exposed to open sky.

The isolation transceiver contains a battery-powered clock that keeps the magnetometer synchronized to current date and time. This clock is set by the integrated GPS, external GPS or by top-side PC using the time setting command, and should remain accurate for several days following its setting. The integrated on-board battery will automatically recharge whenever power is connected to the transceiver. This battery never requires replacement under normal usage.

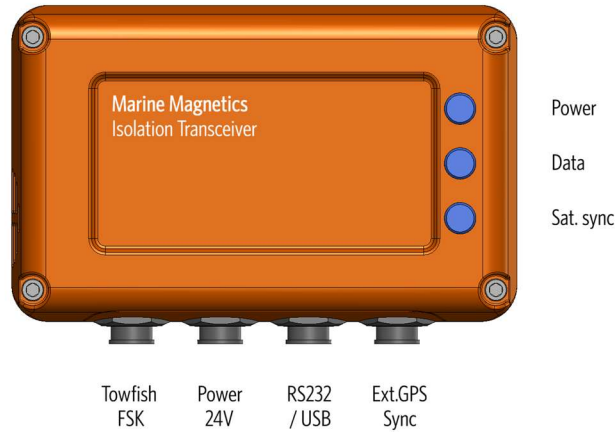


Figure 4-1 - Desktop (top-side) isolation transceiver with integrated GPS and external GPS sync input

LED	Flashing
Power LED	Green: towfish detected. Red: towfish not detected (not drawing power), or towfish power is disabled
Data LED	Blue flashes: data readings are being received from the towfish
Satellite Sync LED	Blue flashes: searching for satellite signal. Blue solid: synced to satellite UTC time

Figure 4-2 - Transceiver LED state indications

The side scan sonar interface transceiver features the same functionality as the top-side desktop transceiver, while being enclosed in a submersible pressure housing. Two types of mechanical couplings are offered: slot and tab, for fitting to a variety of sonar models.

Note that the sonar data interface cable is supplied by the sonar manufacturer, while the magnetometer interface cable is supplied by Marine Magnetics.

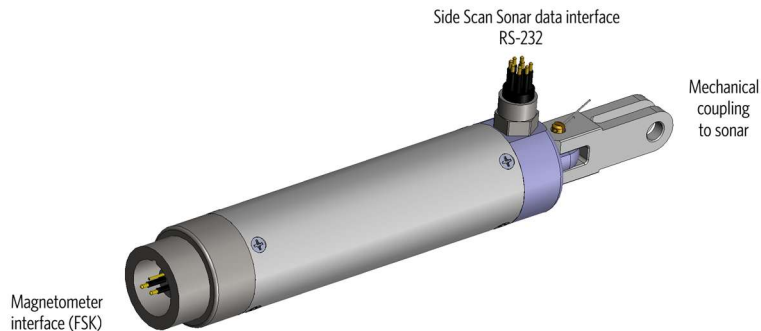


Figure 4-3 - Side Scan Sonar interface transceiver (submersible) shown with a slot coupling

4.1 Configuring the gen.3 isolation transceiver and Synapse 2 towfish

Gen.3 isolation transceiver supports Synapse gen.2 magnetometers, as well as legacy products such as Synapse gen.1 and SeaSPY2, except SeaSPY gradiometers. Refer to Section 6 for Synapse command protocol overview.

Command	Description
\$time	Get Time and Date. Requests current transceiver time. If a towfish is connected it will also check the towfish time and synchronize it to the transceiver time if there is a discrepancy. e.g. response: #time,0,250922/15:22:39.2
\$time,,250922152239	Set transceiver date and time. (Formerly T command) As soon as the time is set, the IT will attempt to set the time of the towfish, provided one is connected. The IT will remember the time after it is powered off for as long as the internal battery retains charged. Note that if the integrated GPS has a satellite lock, the satellite time will always override any user-configured time.
\$stat,0	Scan sensors in the transceiver. (Formerly D command) Get output voltage (45.9V), current (123mA), power (05.6W) from the transceiver. e.g. response: #stat,0,45.9,123,05.6 In addition to querying the towfish this command also displays the voltage being supplied by the IT, and the current and power consumption of the magnetometer, as well as the depth sensor reading.
\$stat,<sn>	Scan sensors in the Synapse towfish SN <sn>. (Formerly D command)
\$fver,0	Get firmware version from the transceiver e.g. response: #fver,<sn>,3.5.0,C4A8DDFB,02.0.0 Firmware Version (3.5.0) and checksum (C4A8DDFB) and protocol revision (2.0.0)
\$fver,16043	Get firmware version from the Synapse towfish SN 16043
\$clst	Get list of all connected Synapse towfish, and their internal sensor configurations
\$sync,,1	Resync Synapse network
\$smp1,,10	Begin sampling at 10 Hz (this command propagates to all connected towfish)
\$smp1,,0	Stop sampling (this command propagates to all connected towfish)
\$data	Get data format setting from current master towfish e.g. response: #data,16043,0 - (0: normal, 1: compact, 2: base64 compressed)
\$data,,1	Set data format to Compact (1) in the current master towfish (,,)
\$dzro	Get zero-depth calibration from current master towfish e.g. response: #dzro,<sn>,0,672,0004.2 0:depth not zeroed. Current zero setting is 672mV. Current depth reading 4.2m
\$dzro,,1	Set zero depth to current pressure. (this command propagates to all connected towfish) e.g. response: #dzro,<sn>,1,672,0000.1 1:depth was zeroed. Zero level is 672mV. Current depth reading 0.1m
\$cons,<sn>,F	Enable all available sensors in unit <sn> e.g F = 1111, where IMU = bit 3, altimeter = bit 2, depth = bit 1, mag = bit 0.
\$menu,0	Transceiver configuration menu

Table 4 - Isolation Transceiver gen.2 and Synapse 2 commands

4.2 Configuring the gen.2 Side Scan integration transceiver

Gen.2 isolation transceiver is compatible with legacy products such as SeaSPY2, SeaSPY2 gradiometer, SeaQuest and Synapse gen.1, but is not compatible with Synapse gen.2. The information below is included here for reference only.

Command	Description
SPC or t	Get Time: Requests current transceiver time. If a towfish is connected it will also check the towfish time and synchronize it to the transceiver time if there is a discrepancy.
T	Set transceiver time and date. As soon as the time is set, the IT will attempt to set the time of the towfish, provided one is connected. The IT will remember the time after it is powered off for as long as the internal battery retains charged.
d or D	Scan sensors. In addition to querying the towfish this command also displays the voltage being supplied by the IT, and the current and power consumption of the magnetometer, as well as the depth sensor reading.
?	Display command menu
!	Get towfish serial number.
Ctrl+O	Power On/Off. Toggles power to the towfish.
Ctrl+B	Change transceiver RS-232 baud rate for the top-side telemetry link (PC-Transceiver)
Ctrl+T	Resync towfish to the transceiver clock
Ctrl+X	Abort/Cancel current command
*	Enter transceiver diagnostic mode. A security code is required.

Table 5 - Isolation Transceiver gen.1 commands

Use <Ctrl+B> to configure the transceiver's communication settings:

```

^B
Change comm settings
PC-115200bps GPS-9600bps FISH-31200bps
1- xcvr<->PC
2- xcvr<->GPS
3- xcvr<->towfish
4- xcvr<->towfish comm channel
    
```

Selection option 1 to change the Transceiver-PC baud rate:

```

1
>1-Set xcvr<->PC baud rate
1:2400 2:4800 3:9600 4:38400 5:115200
    
```

Use <Ctrl+X> to if you need to cancel the command

```

^X
>
Aborted
-Baud rate not changed
    
```

4.3 Isolation transceiver electrical specifications

An isolation transceiver is required when operating a Synapse magnetometer or Synapse array system via a 2-conductor tow cable. The transceiver provides a clean regulated power supply to the towfish or array and converts the RS-232 data interface to FSK, enabling telemetry over long tow cables. The isolation transceiver also features a battery-powered clock for synchronizing the towfish or array, and an integrated GPS to ensure precise synchronization to UTC time.

A standard desktop isolation transceiver is used when powering up to three Synapse magnetometers. Systems containing more than 3 magnetometers require the use of a high-output isolation transceiver.

The recommended input voltage for the isolation transceiver is 24V.

Table 6 – Desktop and Side Scan Interface isolation transceiver electrical specifications

Parameter	Units	Min	Typ.	Max
Input Voltage (transceiver)	VDC	9 V	24 V	30 V
Output Voltage (transceiver)	VDC	45 V	45 V	45 V
Output Power (Max)	W	-	-	25 W
Input Power – without towfish connected	W	2.5 W	3 W	3 W
Input Power – with single Synapse connected	W	7 W	10 W	10 W
Output Power – with single Synapse connected	W	3.5 W	5.5 W	7 W
Output Power – 2-mag gradiometer	W	7 W	10 W	14 W
RS-232 Baud Rate	baud	9600*	115200	115200

Table 7 – Towfish electrical connector wiring for desktop isolation transceiver (2-pin towfish connector)

Pin	Function	Notes
1	V+ / FSK +	45 VDC + FSK telemetry
2	GND	

If the transceiver output current exceeds 3.4 A, an internal fuse will trip and stay tripped until the output load returns to a reasonable level. It will then automatically reset itself. A short circuit in the tow cable or at the tow connector will not cause damage to either the interface electronics or the towing system.

Table 8 - High-output power underwater transceiver electrical specifications

Parameter	Units	Min	Typ.	Max
Input Voltage (transceiver)	VDC	11 V	24 V	30 V
Output Voltage (transceiver)	VDC	50 V	50 V	50 V
Output Power (Max)	W	-	-	160 W
Output Power – gradiometer (2 mags + 2 ALT)	W	10 W	10.5 W	11 W
Output Power – array (10 mags + 2 ALT)	W	60 W	65 W	70 W
RS-232 Baud Rate	baud	9600*	115200	115200

Table 9 - Electrical connector wiring for high-power underwater isolation transceiver (Input brass MCBH8M connector)

Pin	Function	Notes
1	V+	11-30 VDC, 125W
2	RS-232 – PC > MAG	Telemetry interface
3	RS-232 – MAG > PC	Telemetry interface
4	GND	Power and RS-232 GND
5	N/C	
6	N/C	
7	GNSS RS-232 Rx	Optional NMEA GNSS input for time synchronization. Should be shielded.
8	GNSS RS-232 GND	

NOTE: The brass end cap of the underwater isolation transceiver serves as a heatsink for dissipating the heat from the internal power supply. When used in a lab setting, it is important to provide a means of active cooling to the bulkhead by immersing it in water.

Table 10 - Electrical connector wiring for high-power underwater isolation transceiver (Output MCBH8F connector)

Pin	Function	Notes
1	N/C	
2	N/C	
3	N/C	
4	N/C	
5	FSK + / V+	50 VDC + FSK telemetry
6	FSK + / V+	50 VDC + FSK telemetry
7	GND	
8	GND	

5 Synapse Data Format

5.1 Standard Format – Single magnetometer

The Standard data format is the most commonly used, and is usually the default setting when a Synapse magnetometer is first shipped. The data string appears as follows:

```
~HHMMSS.sss SSSL FFFFF.FFF DDDD.D AAA.AA ASG AV.V AW +PP.PP +RRR.RR YYY.YY*CS CR LF
```

TIME
MAG DATA
DEPTH
ALTIMETER DATA
IMU DATA
CHKSM

Example:

```
~162046.101 104G 52846.465 0000.1 599.99 030 18.0 99 -02.37 +010.07 357.07*2E
```

The first character of each data line is always ~ (ASCII code 126). This leading character is supplied for automated data collection systems that require periodic synchronization with the data stream.

The first character of each Synapse protocol command sent to the Master node is \$.

The first character of each response from the Master node is #.

Each letter shown in italics stands for a digit of a particular record in the reading.

Table 11 - Standard data format description for Synapse magnetometers

Column	Description
<i>HHMMSS.sss</i>	UTC Time of the magnetometer reading. Nominally, it occurs at the even fraction of a second as determined by 1/sample-rate. However, a string can be delayed by slight differences in sync between sensor nodes, and transmission times from sensor nodes. e.g. 162406.100
<i>SSSL</i>	Signal Strength of the current sensor reading e.g. 104
<i>L</i>	Sensor Lock Status. (G during normal sampling) A,B,C or D: Starting up, E: heat stabilizing, F: Scanning for signal, G: Locked.
<i>FFFFF.FFF</i>	Magnetic field in nT, with a precision of 1pT. e.g 53577.252
<i>DDDD.D</i>	Depth sensor reading in meters, with a precision of 0.1m. e.g 0012.3 or -000.2
<i>AAA.AA</i>	Echo sounder altimeter reading, in meters (if installed), with a precision of 0.01m. Maximum theoretical range: 0-599.99m, where 599.99 indicates no return.
<i>ASG</i>	Altimeter return signal strength. 000 indicates no return.
<i>AV.V</i>	Altimeter output drive pulse amplitude (Volts). Range: 1-18V during normal operation. 25.5V indicates that altimeter is disabled.
<i>AW</i>	Altimeter output drive pulse width (µs x 10). e.g. 33 = 330 µs
<i>+PP.PP</i>	IMU Pitch angle (deg). e.g. -02.37 (positive pitch is nose-down)
<i>+RRR.RR</i>	IMU Roll angle (deg). e.g. +010.07 (positive roll is to starboard)
<i>YYY.YY</i>	IMU Yaw reading (deg). e.g 357.07 (azimuth)
<i>*CS CR LF</i>	Checksum followed by Carriage Return and Line Feed (ASCII 13 and 10)

Please refer to the Synapse Array Interface Protocol for details on all commands and data format.

5.2 Compact Format – Single magnetometer

The Compact data format can be used when data bandwidth restrictions require it. It excludes the magnetometer signal strength and two optional altimeter parameters, as well as the IMU yaw angle, reducing the overall length of the data string.

The data string appears as follows:

```
~HHMMSS.sss L FFFFF.FFF DDDD.D AAA.AA ASG +PP.PP +RRR.RR*CS CR LF
```

TIME	MAG DATA	DEPTH	ALTIMETER	PITCH ROLL	CHKSM
------	----------	-------	-----------	------------	-------

Example:

```
~162046.101 G 52846.465 0000.1 599.99 030 -02.37 +010.07*2E
```

The first character of each data line is always ~ (ASCII code 126). This leading character is supplied for automated data collection systems that require periodic synchronization with the data stream.

The first character of each Synapse protocol command sent to the Master node is \$.

The first character of each response from the Master node is #.

Each letter shown in italics stands for a digit of a particular record in the reading.

Table 12 - Compact data format description for Synapse magnetometers

Column	Description
<i>HHMMSS.sss</i>	UTC Time of transmission of the string. (Towfish time is set by the isolation transceiver) Nominally, it occurs at the even fraction of a second as determined by 1/sample-rate. However, a string can be delayed by slight differences in sync between sensor nodes, and transmission times from sensor nodes. e.g. 162406. 101 transmission time corresponds to a reading that was taken at 16:24:06. 100
	(no signal strength data in compact format)
<i>L</i>	Sensor Lock Status. (G during normal sampling) Rubidium Synapse: A,B,C or D: Starting up, E: heat stabilizing, F: Scanning for signal, G: Locked. Overhauser Synapse: TBD
<i>FFFFFF.FFF</i>	Magnetic field in nT, with a precision of 1pT. e.g 53577.252
<i>DDDD.D</i>	Depth sensor reading in meters, with a precision of 0.1m. e.g 0012.3 or -000.2
<i>AAA.AA</i>	Echo sounder altimeter reading, in meters (if installed), with a precision of 0.01m. Maximum theoretical range: 0-599.99m, where 599.99 indicates no return.
<i>ASG</i>	Altimeter return signal strength. 000 indicates no return. (no additional altimeter data in compact format)
<i>+PP.PP</i>	IMU Pitch angle (deg). e.g. -02.37 (positive pitch is upwards)
<i>+RRR.RR</i>	IMU Roll angle (deg). e.g. +010.07 (positive roll is to starboard side)
	(no IMU Yaw data in compact format)
<i>*CS CR LF</i>	Checksum followed by Carriage Return and Line Feed (ASCII 13 and 10)

Please refer to the Synapse Array Interface Protocol for details on all commands and data format.

To switch between Standard and Compact data formats, use the \$data command:

```
$data,SN,F (where SN is the node serial number, F represents the data format. 0: Standard, 1:Compact, 2:Base64 compressed)
```

e.g.

```
$data,16022,1 (set the data format to 1 (compact) on Synapse unit 16022)
```

```
#data,16022,1 (confirmation response from the Synapse node 16022, showing the new data format setting)
```

5.3 Compressed (Base64) Format – Single magnetometer

The Base64 compressed format contains all data from the Standard format, but compresses it to a single hex value to save space.

This format offers the best data density for communication channels with limited bandwidth, but requires decoding by the top side data logger.

The data string appears as follows:

```
$data,16022,2
#data,16022,2
~185211.101 DwoC/A3FAAYABQWLAD3IMv7m9dsGow*4B
~185211.201 DwoC/A5nAAYABgWLAD3IMv7m9dsGng*41
~185211.301 DwoC/A45AAYABQUZAD3IMv7m9doGoQ*13
```

Compare to equivalent Standard data string:

```
$data,16022,0
#data,16022,0
~185211.401 102G 50073.121 0000.0 013.05 061 20.0 50 -02.83 -025.98 016.99*44
~185211.501 106G 50072.891 0000.0 005.28 064 20.0 50 -02.83 -025.98 017.00*4B
~185211.601 104G 50073.439 0000.0 005.28 064 20.0 50 -02.83 -025.98 017.01*45
```

5.4 Gradiometer and Array Data – Standard format

When multiple Synapse nodes are connected, their respective data strings simply get concatenated together by the Master node before being forwarded to the host system, with only a single time stamp column at the start.

The number of connected nodes and their order of appearance in the combined data string is reported as part of the #clst response which occurs automatically every 4 minutes, and can be requested at any time using the \$clst command.

Note: The master node data always appears first in the string, followed by all other connected nodes in order of increasing serial numbers. This is indicated in the #clst response, which lists the connected nodes:

```
#clst,0,02,16022-F/F,16023-F/F *03
```

Data format: 0 (standard)

Nodes connected: 2

Master node SN: 16022, with all peripherals installed and enabled (-F/F)

2nd node SN: 16023, with all peripherals installed and enabled (-F/F)

Example: A 2-node horizontal gradiometer with both altimeters enabled:

```
~185304.502 099G 50074.376 0001.1 599.99 000 20.0 50 -02.71 -025.98 016.81 102G 50074.645 0001.1 599.99 000 20.0 50 -02.64 -025.92
```

TIME	Master node (16022) data string	Client node (16023) data string
018.28*48		
	CHKSM	

IMPORTANT: Each Synapse unit within an array may be configured to have its own unique sensor configuration. To ensure the data logging software is correctly interpreting the current data string, it is crucial to monitor the #clst response, issued automatically every 4 minutes by the Synapse master, and any time the configuration changes. It can be requested at any time by sending the \$clst command.

\$clst – this command returns the list of all connected nodes, their serial numbers and installed sensors (as a 1-byte code), always beginning with the master node. Refer to Section 6 for Synapse command protocol overview.

e.g.

```
$clst
#clst,0,02,16043-F/F,16042-F/F*18
```

Interpretation:

```
#clst      current node list
0          data format = 0 (Standard/Full)
02         2 Synapse nodes are connected
16043-F/F  Master node is SN 16043, and it has all peripheral sensors installed (F = 1111), and all are enabled (F = 1111)
16042-F/F  2nd node is SN 16042, and it has all peripheral sensors installed (F = 1111), and all are enabled (F = 1111)
```

5.5 Missing sensor measurements in data

Missing data measurements are replaced by the dashes as placeholders, and may indicate an issue with one or more internal sensors.

Example:

In this example the magnetometer is warming up and still reporting zeros, preceded by the 000 signal strength and C status (warming up).

However the altimeter data is missing as indicated by the dashes; while the Depth and IMU data are present.

```
#c1st,01,16022-F*72
~155727.915 000C 00000.000 0000.1 ----. -- --- --.- -- +00.71 -004.10 359.99*53
~155728.015 000C 00000.000 0000.2 ----. -- --- --.- -- +00.70 -004.09 359.99*55
~155728.115 000C 00000.000 0000.1 ----. -- --- --.- -- +00.70 -004.09 359.99*55
```

TIME	MAG DATA	DEPTH	ALTIMETER DATA	IMU DATA	CHKSM
~155727.915	000C	00000.000	0000.1 ----. -- --- --.-	+00.71 -004.10	359.99*53
~155728.015	000C	00000.000	0000.2 ----. -- --- --.-	+00.70 -004.09	359.99*55
~155728.115	000C	00000.000	0000.1 ----. -- --- --.-	+00.70 -004.09	359.99*55

5.6 Synapse data examples

Synapse data string has a fixed length set by the number of activated sensors in each towfish. The data string will show dashes in place of readings for sensors that aren't working properly. If a particular sensor is not installed, its data columns won't be present in the data string at all.

#clst response indicates which sensors are installed

e.g. #clst,01,16001-F/F - the first F indicates which sensors are installed (F = 1111, i.e. all 4 sensors are installed)

e.g. #clst,01,16001-F/F - the 2nd F indicates which sensors are currently enabled/activated (F = 1111, i.e. all 4 sensors are enabled)

NOTE: If a sensor gets deactivated using the \$scons command (or via Synapse Configurator in BOB), its readings will be replaced with dashes until a \$sync command is issued. After that the entire data column corresponding to the deactivated sensor will disappear from the data string.

Refer to Section 6 for Synapse command protocol overview.

Single Synapse unit: SN 16001

Normal operation. All sensors enabled. All sensors are ok.

Mag transitions from warm-up (E) to scanning (F) to normal sampling (G) as part of normal start-up sequence

```
#clst,01,16001-F/F
~203828.601 000E 00000.000 0000.1 599.99 030 18.0 75 -01.25 +005.34 002.37*4F
~203828.701 000E 00000.000 0000.1 599.99 030 18.0 75 -01.25 +005.34 002.37*4F
~203828.801 041F 14064.086 0000.1 599.99 030 18.0 75 -01.25 +005.34 002.37*45
~203828.901 054F 31151.584 0000.1 599.99 030 18.0 75 -01.25 +005.34 002.37*46
~203829.001 066F 33406.056 0000.1 599.99 030 18.0 75 -01.25 +005.34 002.36*4D
~203829.101 089G 47356.675 0000.1 599.99 030 18.0 75 -01.25 +005.34 002.36*4C
~203829.201 090G 48755.684 0000.1 599.99 030 18.0 75 -01.25 +005.33 002.37*4A
~203829.301 091G 48812.688 0000.1 599.99 030 18.0 75 -01.25 +005.34 002.36*4C
~203829.401 094G 48812.205 0000.1 599.99 030 18.0 75 -01.26 +005.34 002.36*4E
```

TIME	MAG DATA	DEPTH	ALTIMETER DATA	IMU DATA	CHKSM
------	----------	-------	----------------	----------	-------

Mag, depth and IMU are OK, altimeter is not working (dashes)

```
~155948.101 100G 33893.000 -000.3 ---- - - - - - +00.75 -004.58 359.61*46
~155948.201 200G 44290.652 -000.3 ---- - - - - - +00.75 -004.58 359.61*4E
~155948.301 300F 51138.018 -000.3 ---- - - - - - +00.75 -004.57 359.61*4D
```

Mag and Altimeter are not working, but depth and IMU are OK

```
~155948.101 ---- - - - - - -001.3 ---- - - - - - +00.75 -004.58 359.61*46
~155948.201 ---- - - - - - -001.3 ---- - - - - - +00.75 -004.58 359.61*4E
~155948.301 ---- - - - - - -001.3 ---- - - - - - +00.75 -004.57 359.61*4D
```

Only depth sensor is working (likely cause: sensor power got disabled by the \$pwrt command)

```
~155948.101 ---- - - - - - -001.3 ---- - - - - - ---- - - - - - *46
~155948.201 ---- - - - - - -001.3 ---- - - - - - ---- - - - - - *4E
~155948.301 ---- - - - - - -001.3 ---- - - - - - ---- - - - - - *4D
```

Two Synapse units: SN 16001 and 16002, with 16001 configured as Master

Unit #1: Only depth sensor is working

Unit #2: Everything except for the altimeter is working

```
#cmds,10001,1
Syncing Network...
#clst,02,16001-F/F,16002-F/F
Syncing Rb Mag...
~153648.815 ---- - - - - - -000.3 ---- - - - - - 800F 28390.383 -000.3 ---- - - - - - +00.60 +001.42 358.63*63
~153648.915 ---- - - - - - -000.3 ---- - - - - - 900G 43692.051 -000.2 ---- - - - - - +00.59 +001.42 358.63*6F
~153649.015 ---- - - - - - -000.4 ---- - - - - - 000F 52363.888 -000.3 ---- - - - - - +00.59 +001.42 358.63*6E
~153649.115 ---- - - - - - -000.3 ---- - - - - - 100F 40664.911 -000.3 ---- - - - - - +00.59 +001.42 358.63*69
~153649.215 ---- - - - - - -000.4 ---- - - - - - 200F 26748.515 -000.3 ---- - - - - - +00.59 +001.41 358.63*6A
~153649.315 ---- - - - - - -000.4 ---- - - - - - 300G 39774.320 -000.3 ---- - - - - - +00.60 +001.41 358.63*60
```

TIME	MAG1	DEP 1	ALTIMETER 1	IMU1	MAG2	DEP 2	ALTIMETER 2	IMU2	CHKSM
------	------	-------	-------------	------	------	-------	-------------	------	-------

Unit 1: Mag, depth and IMU are working, altimeter not working.

Unit 2: Depth and IMU are working, mag and altimeter are not.

```
~154329.015 999F 44832.320 -000.4 ---- - - - - - +00.44 +000.26 003.20 ---- - - - - - -000.3 ---- - - - - - +00.00 +000.00 360.00*62
~154329.115 099F 50500.261 -000.3 ---- - - - - - +00.44 +000.26 003.20 ---- - - - - - -000.3 ---- - - - - - +00.00 +000.00 360.00*60
~154329.215 200F 36900.111 -000.3 ---- - - - - - +00.43 +000.27 003.20 ---- - - - - - -000.3 ---- - - - - - +00.00 +000.00 360.00*6F
~154329.315 300F 26495.567 -000.3 ---- - - - - - +00.43 +000.25 003.20 ---- - - - - - -000.3 ---- - - - - - +00.00 +000.00 360.00*68
~154329.415 400G 44076.427 -000.4 ---- - - - - - +00.43 +000.27 003.20 ---- - - - - - -000.3 ---- - - - - - +00.00 +000.00 360.00*64
```

TIME	MAG1	DEP 1	ALTIMETER 1	IMU1	MAG2	DEP 2	ALTIMETER 2	IMU2	CHKSM
------	------	-------	-------------	------	------	-------	-------------	------	-------

6 Synapse Command Protocol Overview

Synapse command protocol was developed to effectively manage networks (arrays) of magnetometers, referred to as array nodes each with a unique network address. The following section illustrates an overview of the commands with examples of their use. For a complete and detailed list of all supported commands and their parameters, please refer to the Synapse Command Protocol document.

6.1 General command format rules.

1. All commands start with '\$' character, followed by 4 letters (e.g. \$smpl - sampling rate command/query)
2. In general, a standalone command with no parameters, or only a network address, is a query.
3. The first parameter is always the unit Serial Number (SN) which represents the array network address
(e.g. \$fver,16010 - get firmware version from node 16010)
4. Transceiver is always referred to as node zero (SN = 0)
5. A command with both a network address and an additional parameter is used to set or change a setting.
6. Command parameters are comma-delimited (e.g. \$smpl,16010,5 - change sampling rate on node 16010 to 5 Hz)
7. All responses/acknowledgements to commands start with '#' character. (e.g. #smpl,16010,10 - the current sampling rate is 10 Hz)
8. FSK transceiver is always addressed as node 0. (e.g. \$stat,0 - get power output status of the transceiver (formerly 'd' command))
9. The serial number may be omitted completely, in which case the command will address the 'default' node on the network.
(e.g. \$stat,, - get sensor status from the default node) (NOTE: commas delimiting the SN are still required if the SN itself is omitted)
When using FSK, the default node is the master node. All nodes connected to FSK will receive the command, but only the master node will respond. When using direct RS232 connection, the default node is the one connected to the current RS232 port. Only the connected node will receive the command. (e.g. \$smpl,,0 - stop sampling on the default node. \$smpl,,10 - set sampling to 10 Hz on the default node)
10. Certain commands important to the entire array's operation are forwarded by the master to all other nodes on the CAN bus network. These include the \$smpl, \$time, \$dzro
11. Command parameters are ASCII-encoded characters (can be numeric digits forming integer numbers or letters).
12. <CR> (carriage return) character ends the command. (You must hit Enter at the end of the command).
13. Valid commands sent over the RS232 link always receive a response beginning with a '#', provided they are addressed to the correct node, or to the 'default' node (,,). Commands that are not supported, or do not exist, or addressed to the wrong node, will not get any acknowledgement.

FSK vs RS-232 connections:

When using FSK, a command addressed to a specific node (e.g. \$cmds,16010) will be received by all connected nodes, but only the specified node (16010) will acknowledge it. When using RS-232, you must be connected to the specified node in order for this command to take effect. Otherwise it will be ignored and will not receive any acknowledgement.

Omitting the unit SN:

1. These queries are equivalent: \$stat = \$stat,, = \$stat,16010 (when default node SN is 16010)
2. These commands are equivalent: \$smpl,,0 = \$smpl,16010,0 (when default node SN is 16010)

6.2 Synapse commands and responses

6.2.1 Checking status of current Synapse network

\$clst get list of connected nodes

Response: **#clst,0,02,16010-F/F,16011-1/1**

- data format is 0 (standard format)
- 2 nodes are connected: 16010 and 16011.
- 16010 has all peripherals installed and all of those are enabled (F/F). (See the \$cant command for details)
- 16011 has only 1 peripheral installed (mag sensor) and it's enabled.

Note: #clst and automatic time sync happen every 4 minutes. But both can be requested at any time using the \$clst and \$sync commands.

6.2.2 Configuring the network (CAN bus) termination resistors

Note: Each Synapse unit has a provision to act as CAN bus termination resistor. There must be at least 1, and no more than 2 termination resistors enabled on a given CAN bus network. Ideally these must be at the beginning and end of the CAN bus wiring harness. Without any resistors enabled, CAN bus may not function, and nodes will not see each other. Erratic master/client behavior and shorter than expected node lists (\$clst responses) can usually be traced to incorrect CAN termination resistor configuration.

\$cant get CAN bus termination resistor status from current master node (1/0)

Response: **#cant,16010,0** – CAN termination is disabled in unit 16010

\$cant,,1 set CAN bus terminator to On in current default node (i.e. master node if using FSK, or currently connected node if using RS-232)

Response: **#cant,16010,1** – CAN termination is enabled in unit 16010

\$cant,16010,1 set CAN bus terminator to On in node 16010.

When using FSK, this command will be received by all connected nodes, but only the specified node (16010) will acknowledge it. When using RS-232, you must be connected to the specified node in order for this command to take effect. Otherwise it will be ignored and receive no acknowledgement.

6.2.3 Assigning master node and requesting master/client status

NOTE: Synapse gen.2 networks automatically assign a master when no master is detected. But you can over-ride it by assigning a master node of your choice. When connecting via a single RS-232 link to an array of several units, you must assign the node you connect to as master to operate the array.

\$cmds get master/client status from current default node

Response: **#cmds,16010,0** - current node 16010 is a client (0 = client, 1 = master)

\$cmds,,1 set current default node to Master (1)

Response: **#cmds,16010,1** - current node 16010 is a Master (0 = client, 1 = master)

\$cmds,16010,1 set node 16010 to Master (1). This works only when connected via FSK, when all nodes receive all commands.

6.2.4 Checking and setting the time and date

\$time query the master node for its time (equivalent to: \$time,,)

\$time,0 query the transceiver for its time

\$time,,250623123456 set the time of the default node to 2025/06/23 (2025, June 23) 12:34:56

\$time,16010,250623123456 set the time of node 16010 to 2025/06/23 (2025, June 23) 12:34:56

Response via transceiver: **#time,0,250623/15:54:32.4** (here 0 indicates SN=0 i.e. the transceiver)

Response via RS232: **#time,16010,250623/15:54:32.4** (if connected directly to node 16010)

6.2.5 Array synchronization

\$sync get sync status of the current master node/current RS232 node

Response: **#sync,16010,0,1** - 0 = sync was not requested, 1 = is node synced

\$sync,,1 initiate resyncing the network (sync all mag nodes to the master node), and refresh node list

Response: **#sync,16010,1,1** – 1: sync requested, 1: node is now synced

NOTE: **#clst** usually follows the **#sync** response, to report the refreshed node list

6.2.6 Enabling/disabling power to towfish, and power to internal peripherals within towfish

\$pwrt,0,0 turn output power to Off in the transceiver (formerly Ctrl+O toggle). Power to towfish/towcable disabled.

\$pwrt,0,1 turn output power to On in the transceiver (formerly Ctrl+O toggle) Power to towfish/towcable enabled.

\$pwrt,16010,0 turn internal peripheral power to Off in the towfish 16010. (Synapse node continues running)

\$pwrt,16010,1 turn internal peripheral power to On in the towfish 16010

6.2.7 Checking output voltage and current, and power to peripherals (voltage and current)

\$stat,0 get output voltage, current and power from the transceiver (formerly 'd')

\$stat,, get internal regulated supply voltage current and power from the current master node

\$stat,16010 get internal regulated supply voltage current and power from towfish 16010 (formerly 'd')

6.2.8 Depth sensor calibration

\$dzro get current depth calibration from master node / current RS232 node

Response: **#dzro,16010,0,672,0004.2**

-0: depth not zeroed.

-672: Zero level is 672mV.

-0004.2: Current depth reading 4.2m

\$dzro,,1 set current pressure as zero meters on all connected nodes (forwarded by the master to all nodes)

6.2.9 Checking firmware versions

\$fver get the firmware version of the master node

\$fver,16038 get the firmware version of unit 16038

Response: **#fver,16038,2.1.0,A9B09CB,2.0.0**

-2.1.0: node firmware version.

-A9B09CB: firmware checksum.

-2.0.0: command protocol version

\$fver,0 get the firmware version of the FSK transceiver (node 0) if connected

Response: **#fver,0,3.5.0,C3B8CD08,2.0.0**

6.2.10 *Checking or setting output data format*

\$data get current data format (0 = standard, 1 = compact, 2 = base64 compressed)

\$data,,1 set data format to compact (1) on current default node

Response: **#data,16010,1**

6.2.11 *Configuring peripherals inside the Synapse towfish*

Each Synapse towfish may be equipped with up to 4 available peripherals: magnetometer, pressure sensor, IMU and altimeter.

A 4-bit hex code is used to indicate the unit’s peripheral configuration.

\$cons command is used to query/set available peripherals to enabled or disabled. (also see: \$clst command)

\$cons get current peripheral configuration from the master node / current RS232 node

\$cons,16010 get current peripheral configuration from node 16010

#cons responds with the SN of the current unit, and a code identifying the combination of peripherals that are enabled

e.g.: **#cons,16010,5** (5 = 0101: Altimeter and Mag sensor enabled)

\$cons,16010,F set peripheral configuration to **all enabled** (F = 1111) in node 16010

Response: **#cons,16010,F**

#clst also responds with the peripheral configuration, and shows which peripherals are installed in addition to which are enabled

e.g. **#clst,0,01,16010-F/5** - all peripherals are installed (F = 1111) in 16010, but only Mag and Altimeter are enabled (5 = 0101)

The installed peripherals are configured through the node’s menu (\$menu command)

Table 13 - Synapse peripherals configuration codes

#cons setting	configuration	IMU (bit 3)	Altimeter (bit 2)	Pressure (bit 1)	Mag (bit 0)
0	No peripherals	0	0	0	0
1	Mag only	0	0	0	1
2	Depth only	0	0	1	0
3	Mag + Depth	0	0	1	1
4	Altimeter only	0	1	0	0
5	Mag + Altimeter	0	1	0	1
6	Depth + Altimeter	0	1	1	0
7	Mag + Depth + Altimeter	0	1	1	1
8	IMU only	1	0	0	0
9	Mag + IMU	1	0	0	1
A	Depth + IMU	1	0	1	0
B	Mag + Depth + IMU	1	0	1	1
C	Altimeter + IMU	1	1	0	0
D	Mag + Altimeter + IMU	1	1	0	1
E	Altimeter + Depth + IMU	1	1	1	0
F	All peripherals	1	1	1	1

6.2.12 Configuring towfish menu

\$menu open the default node configuration menu
 (Opening the menu stops all other processes temporarily, but will time-out after 4 seconds)

Response:

Choose:

1 - Serial number 16014 <- also accessible via \$cnsn command
 2 - Voltage 65535
 3 - Current 65535
 4 - Peripherals: 1 <- installed peripherals (as opposed to enabled). Mag only in this case (code 1)
 5 - Mag bps: 230400 <- this is the standard setting
 6 - Mag echo: OFF <- also accessible via \$echo command
 7 - Output Data NORM <- also accessible via \$data command
 8 - CAN bus termination OFF <- also accessible via \$cant command
 9 - FSK telemetry ACTIVE <- RS232 telemetry will be shown instead when connected via FSK
 Aborted <- menu mode exits automatically after 4 seconds

6.2.13 Configuring transceiver menu

\$menu,0 open the node zero (transceiver) configuration menu
 (Opening the menu stops all other processes temporarily, but will time-out after 4 seconds)

Response:

Choose:

1 - Serial number 12347
 2 - bps rate ch0 (host): 115200bps <- RS-232 PC-to-Transceiver baud rate
 3 - bps rate ch1 (gps): 9600bps <- external GPS baud rate
 4 - bps rate fsk : 31250bps <- Transceiver-to-Towfish baud rate (FSK baud rate)
 5 - Det Threshold (0.1mA) 00050 <-Towfish detect current threshold (5 mA)
 6 - Current Limit (0.1mA) 20000 <-Output current limit (2.0 A)
 7 - FSK Version (gen) 1 <- Choose FSK Version: 0:gen0 (SeaSPY/Synapse gen.1), 1:gen1 (Synapse gen.2)

7 Maintenance

A Synapse system is designed to withstand years of use in harsh marine environmental conditions. Provided that simple common sense procedures are observed when deploying and storing the instrumentation, your Synapse system will continue to deliver high quality performance with no need for service at the Marine Magnetics facility.

7.1 Deployment and Storage Tips

- Use Molykote Dow Corning high vacuum grease to lubricate the Subconn connectors on both the Synapse magnetometer and on the tow cable. This preserves electrical contacts and ensures smooth coupling. Follow the manufacturer's instructions for further details: <https://www.macartney.com/connectivity/subconn/technical-information/subconn-handling-instructions/>
- When connecting the main tow connector, ensure proper alignment between the ridge on the tow cable and the slot on the magnetometer. Ensure that the male connector is fully inserted. Tighten the holding nut firmly by hand, making sure that any air pressure inside the connector is completely overpowered. Never use tools to tighten the connector nut!
- Before connecting data cables to the Isolation Transceiver, be sure to carefully observe the connector orientation, and check that none of the electrical pins are bent.
- Do not, under any circumstances, exceed the maximum rated operating depth of the towfish. In some cases, permanent damage may occur to certain components (such as the pressure sensor) if the towfish pressure rating is exceeded by even a small amount.
- Rinse the towfish with fresh water after removal from salt water. Surface corrosion of the brass fittings and screws will only significantly take place after exposure to atmospheric oxygen in the presence of salt water. Rinsing with fresh water will keep the brass fittings clean and shiny.
- Do not store the towfish in direct sunlight, and keep it away from very hot environments. The operating and storage temperature range for a towfish is -40°C to +60°C. Note that when exposed to direct sunlight in a hot environment, the temperature of the magnetometer can easily exceed +60°C. Keeping the towfish stored in moderate temperatures will help prolong the lifetime of the seals and the internal electronics.

7.2 O-ring sizes

All O-rings used in the Synapse towfish are made from nitrile-rubber. All sizes are ASTM.

Location: Rear and front towfish housing seals in current Synapse with 3inch (76mm) tube.

Size: 141 ASTM

Quantity: 2

8 Troubleshooting

In general, the Synapse system relies on the single master node to communicate with the isolation transceiver at the correct baud rate of 31200; and on the isolation transceiver to communicate with the top-side data logging system at a correct baud rate of 115200.

See Sections 4 and 6.2.13 for details on configuring the transceiver baud rates.

The isolation transceiver should still communicate with the host (e.g. top-side data logger) via RS-232 even without the towfish or tow cable connected to it. If you cannot communicate with the isolation transceiver, check the PC-to-transceiver baud rate and the power supply.

Synapse gen.2 offer both FSK and RS-232 telemetry options, and one of those could be disabled in the towfish menu. If you are unable to communicate with the towfish via RS-232, try connecting via FSK and checking the menu settings using command **\$menu**

Check transceiver status LED:

When the towfish is connected to the transceiver and begins drawing electrical power, the Power LED on the transceiver should change from Orange to Green. If it does not, check the tow cable. A red power LED state indicates that the output power is currently disabled.

When the towfish begins sending data to the transceiver, the Data LED will begin flashing at a rate corresponding to the sampling rate.

Check towfish status LED:

Refer to Section 2.6 for LED indicator on the front bulkhead of the Synapse unit.

Blue LED indicates power-up in progress. Green background indicates normal operation. Green with a red flash indicates the master node.

If the LED is solid blue for longer than 90 seconds, ensure the towfish is horizontal or move it away from any iron/magnetic objects or electrical appliances. If the LED is orange, it indicates an issue with the magnetometer sensor.

No LED lights on Synapse towfish: indicates loss of power to the towfish. Either an issue with the tow cable, or no power output from the transceiver. Ensure the transceiver Power LED is green.

Check master node assignment:

The Synapse system requires one of the array nodes (units) to be assigned to act as master node.

In Synapse gen.1 when no master node is assigned, it will appear as though the towfish is not connected. In this case assign a master node manually using commands **\$cmdx,1** followed by **\$cmds,<sn>,1** (where <sn> is the serial number of the unit, e.g. 16023).

In Synapse gen.2 one of the connected towfish will always automatically be assigned to be master. Look for the Green LED with Red flash on the front of the master unit.

In Synapse gen.1 when multiple master nodes are connected, the data seen in the RS-232 terminal will contain unreadable text and non-ASCII characters. Simply assign one of the nodes to act as master node using commands **\$cmdx,1** followed by **\$cmds,<sn>,1** (see Section **Error! Reference source not found.**).

Synapse gen.2 prevents multiple-masters scenario automatically. When the data seen in the RS-232 terminal contains unreadable text it may indicate an incorrect towfish baud rate setting in the transceiver, or that CAN bus terminations are not configured properly in one or more towfish.

If the data shows dashes in place of one of the sensors readings, that sensor may be malfunctioning or has been disabled. Use the Synapse configurator in BOB to enable the sensors as needed, or toggle sensor power off/on. Alternatively use the **\$cons** command to enable the sensors, or the **\$pwrt,<sn>,0** command to toggle the internal sensor power to 0; followed by **\$pwrt,<sn>,1** to re-enable it.

Check CAN bus termination resistors and wiring:

Correct CAN bus configuration and operation is required for automatic master/client arbitration, and for \$clst to respond with the correct list of nodes. At least one and no more than 2 connected units should have their CAN bus termination enabled. Use the command **\$cant,<sn>,1** to enable CAN bus termination in unit <sn>, or **\$cant,<sn>,0** to disable it. Or access the CAN bus settings via towfish menu using **\$menu,<sn>** command.

For additional support, please do not hesitate to contact Marine Magnetics and we will be happy to assist you!

Contact Us:

Tel: +1 905 479-9727
 Fax: +1 905 479-9484
 Email: support@marinemagnetics.com
 URL: www.marinemagnetics.com