

# Sentinel2

Base Station Magnetometer for Land and Sea

## Measure Twice. Survey Once.

Even data collected in ideal weather conditions can be more accurate when you compensate for background variation with a base station.

### New Features

- Integrated GPS for precise automatic time synchronization to UTC time
- WiFi user interface through a smart device or computer; wireless data transfer
- Significantly higher internal storage capacity compared to Sentinel1 when used underwater
- Integrated folding tripod for quick & simple deployment
- Orange shell for visibility
- 30 hrs battery life (@ 1 sample/1s)  
or 40 hrs (@ 1 sample/5s)  
or 45 hrs (@ 1 sample/10s)

### Same Low-Maintenance

- Easy set up, you don't have to orient the sensor, it's entirely omnidirectional

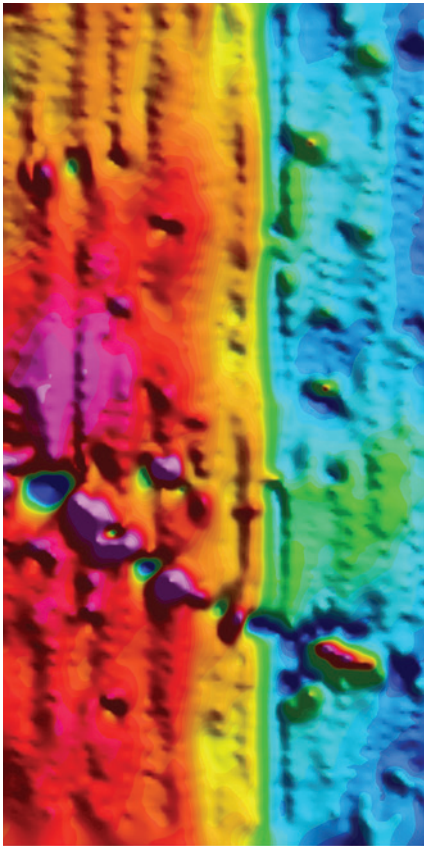
# Survey Insurance

There's no accounting for weather- and magnetic storms are no exception. Even on an average day, background variation caused by atmospheric activity can obscure survey data and make it harder to interpret. On a bad day, noisy atmospheric conditions can render your data totally unusable. Unless you use a second, stationary magnetometer to compensate for both random and systematic background variation, that is.

The new, smaller, lighter, and even easier to set up **Sentinel2** helps you cancel out errors and delivers more accuracy.

## Lucky

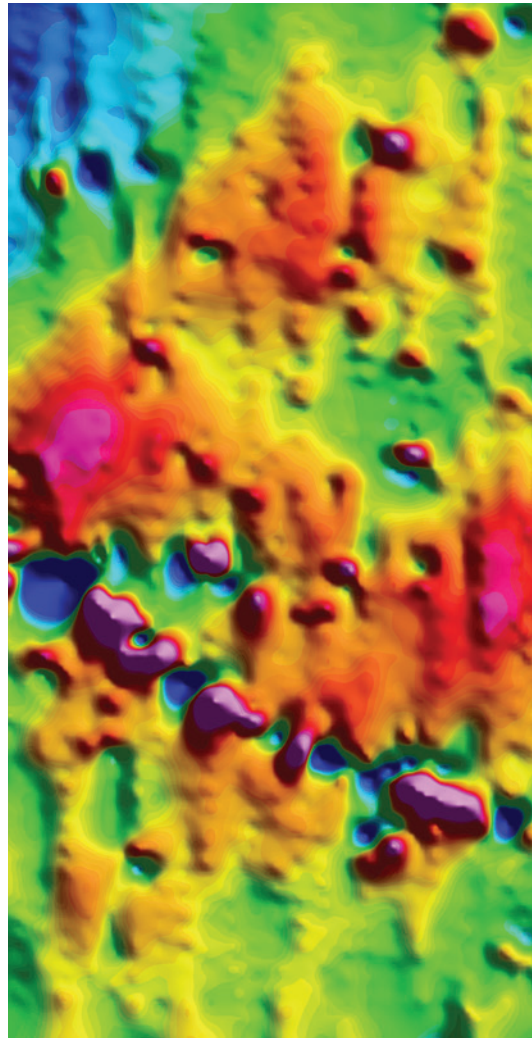
Raw data on a magnetically quiet day.



## Insured



Same data after Base Station correction.



## Unlucky

Raw data on a magnetically stormy day.

